

Columbia Crier

A Publication of the
Columbia Basin Model A Club

Volume 46 Issue 4 April 2015



<www.cbmac.org>

Inside Features:

- Heppner Tour
- Hanford Reach Tour
- 2nd Harvest
- Tri-Tech Tour
- MAFCA News
- Fashion Feature
- How it Works

Meeting Location:

Reata Springs Baptist Church
2830 Leopold Lane, Richland, WA
April 9th, 7:00 p.m.



Rick and Janet Budzeck are posing with their 1931 Slant Window Fordor at the Goose Ridge Estate Vineyard and Winery.



Leadership

President:	Marshall Hauck	783-1444
Vice President:	Jan Jackson	967-2801
Secretary:	Janet Budzeck	943-2522
Treasurer:	Vernita Coffey	947-2668
Historian:	Pete Jackson	783-3317
Correspondence:	Mara Jackson	967-2801
Sunshine:	Bev McGillicuddy	627-1254
Editor:	Jan Jackson	967-2801
Web Master:	William Sperry	572-2459
Restorer:	Robin Eldhardt	967-3081

Meeting Schedule

January:	Tom & Robin Eldhardt/Mary Fraser
February:	Dean & Teri Hinkson
March:	Blaine & Bev McGillicuddy
April:	Rick & Janet Budzeck
May:	Pete & Grace Jackson
June:	Garry & Joanne Bryan
July:	Club Members Potluck
August:	Jan & Mara Jackson
September:	William & Emilia Sperry
October:	Frank & Laura Osterwyk
November:	Calvin & Vernita Coffey
December:	Christmas Brunch

Calendar of Events

Hanford Reach Tour	April 15
2nd Harvest	April 22
Tri-Tech Tour	April 30
Swap Meet - Kennewick	May 2
Dinner & A Play	May TBA
Wine Science Center Tour	May 22
NW Regional Meet	June 23-28

BIRTHDAYS

JOANNE BRYAN	4TH
ROBIN JOHNSON	10TH
DAVE HANNAH	12TH

ANNIVERSARIES

PETE & GRACE JACKSON	5TH
RICK & JANET BUDZECK	6TH
TOM & ROBIN ELDHARDT	16TH

Message from the Prez

Well, I hope you are ready to roll because April is the busiest I've seen since joining the club. Take a good look at your 2015 Tour and Event schedule and make sure you get everything on your calendar.

I have yet to visit the Hanford Reach Center so I'm looking forward to that tour (along with ice cream at Rosie's).



This is the perfect time of the year to get those Model A's on the road. It is still cool – Model A's love "cool." The apple blossoms are in bloom – every Model A knows where the apple blossoms are. Use your Model A as an every day driver once in a while. It is really good to give them some exercise. I think you will find that everything on the car will work better when used frequently.

Looking ahead, we have some special treats coming up this year that you won't want to miss. First is the 3 day tour to Enterprise, Oregon in September. Besides being a beautiful drive, well suited for Model A's, the Enterprise, Joseph and Wallowa area is a treasure chest full of things to see and do. Make your hotel reservations now to make sure you have a room.

The next item that caught my eye is the Halloween Party. Let me tell you, no one can put on a Halloween Party like Teri and Dean! It will be one you won't soon forget.

I could go on and on about all the great activities on tap this year. Buckle your seat belts!

Marshall Hauck

Ladies Lunch

The April Ladies Lunch will be held at The Country Gentleman Restaurant on Wednesday, April 1, at 12:30 p.m. The restaurant is located at 9221 West Clearwater Avenue in Kennewick.

Heppner Tour

The tour to Heppner did not go according to plan. When I awoke on Saturday morning and looked out the window, it was raining and blowing. I called Marshall and we quickly decided to leave the Model A's and continue to Heppner in our modern cars. Five couples attended this event including Budzecks, Eldhardts, Haucks, J. Jacksons and McGillicuddys.

Our first stop was at the sheep dog trials. Even though my family had thousands of sheep in the late 1800's, early 1900's, I had never observed sheep dogs rounding up a flock of cantankerous sheep. It was a truly amazing sight to see these dogs working the sheep and the sheep staring down the dogs and trying to do anything they could to thwart the dog's effort to corral them. We talked to some of the herders and found out how they scored the event. Some of the herders were complaining a bit because these were 'free range' sheep who hadn't seen many humans and may have never seen a dog. So, it was challenging for the dogs, and entertaining for us.

We drove into Heppner, ate lunch and actually got to see the Great Green Parade. It took about 30 minutes to run the mostly motor vehicles down the four blocks of main street. There were vendors selling everything from belt buckles to jalapeño jelly.

The real treat was climbing up the stairs at the Elk's Lodge and being treated to some Irish music. Several bands played and they were all spectacular sounding. One trio of teenage sisters had two violins, a guitar and more energy than nuclear fission.

We drove up to the fairgrounds where I proceeded to take a short cut and was stopped by a gate. Never one to stop short, I got out, took the pins out of the gate and watched with morbid fascination as the whole fence fell over. Thankfully, Rick and Tom gave me a hand and we had it standing back up before anyone handcuffed and took me to the Morrow County jail, which was just about a block away.

At the end of the day we could have taken our Model A's, it wasn't raining all that hard, but when the weather report says wet and windy it's time to use some common sense. We've got more tours coming up and my car is itching to hit the road.

Submitted by Jan Jackson



Hanford Reach Museum Tour

The Hanford Reach Museum tour will start at Rosie's Diner near the Richland Community Center at 11:00 a.m. on April 15th. Does April 15th ring a bell? If you're getting a refund, you can buy more gas! After lunch, we will tour to The Reach and spend a leisurely afternoon meandering through the exhibits. Tour leaders are Tom and Robin Eldhardt.

2nd Harvest

The club's next volunteer effort at the 2nd Harvest facility will be April 22nd. Plan to meet at 9:00 a.m. at 2nd Harvest in Pasco. When our shift is completed we'll drive to the Country Mercantile to enjoy a delicious lunch. Questions should be addressed to Rick and Janet Budzeck.

Tri-Tech Tour

The Tri-Tech tour will start at 9:30 a.m. on April 30th. We will meet at Tri-Tech, which is on Kellogg Avenue across from Charter Cable. They have several old cars they are restoring so it should be fun to see the students working on the classics. After the tour we will head to Applebee's in Kennewick for lunch.

Make sure you drive your Model A to these events, We drove our Sport Coupe to Prosser on Wednesday to pick up the raffle gift for the Northwest Regional Model A Meet in Walla Walla. It's always a good feeling to know everything is working.

MAFCA News

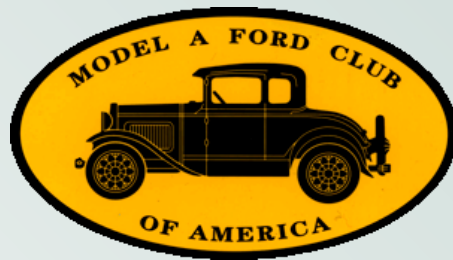
Information obtained from the MAFCA website:

The MAFCA Board of Directors is rolling out a new perk for your membership! Beginning in March, your MAFCA membership will give you access to more Model A information.

What are you going to find in the Members Only section?

Information that is MAFCA specific and not available on the public pages of the site. Included will be links to MAFCA's Policies, MAFCA Insurance information, MAFCA By-laws, Members with Email pages, and access to Technical Seminar Handouts from Regional and National events.

In the future, we will add more to this part of the MAFCA website to include clipart and articles on fashion and technical issues for Chapter Newsletter Editors! There is now an icon on the left hand side of the web site page for Members Only. When you click that icon, you will be asked for a Username and a Password which are case sensitive. Starting with the March/April issue of The Restorer, you will find the Username and Password on the Table of Contents page of every issue. We are confident that you will find this change to the MAFCA website a great benefit to your membership! Thanks for being a member of MAFCA!



The purpose of the club shall be to serve as a medium of exchange of ideas, information and parts for admirers of the Model A Ford, and to aid them in their efforts to restore and preserve the car in its original likeness. Membership in the Model A Ford Club of America is a requirement to joining the Columbia Basin Chapter. To join MAFCA, see the web site at <www.mafca.com> and click on the "Join MAFCA" tab. Requirements for membership in the chapter shall not insist upon the actual possession of a Model A Ford, merely an interest in the objectives of the club and a desire to take an active part in club activities shall be the primary requirement for membership. (Excerpt from Columbia Basin Model A Club Bylaws dated February 2015.)

Fashion Feature

*Fashions of the Model A Ford era.
Fern Davis, reprinted from MAFCA A-World.*

You girls love to ride in a Model A with your dad or boy friend, or maybe you like to drive one yourself. Well, wouldn't it be more fun to look the part, when you wave to all those people who wave to you when you're driving by? Maybe you think the hats from the Model A Era are ugly, well some of them are. But look for one with a small brim, preferably felt, as you can wear these many different ways, and you can find the way to wear it, which will look good on you.

Incidentally, the style most associated with the Model A Era, is the Cloche. This word means bell in French, and they were worn mostly pulled down over the



1928-1929

head, covering the hair, which looks like a bell. These hats were made for a purpose. If you are riding in an open car, do you really want your hair blowing all over your face? Well, these hats prevent that, thus making them very practical.

If you really want to look the part, style your hat to fit the year of your car.



1930



1930

If it is a 1928-1929, pull it all the way to your eyebrows and cover your ears.

If it is a 1930, raise it higher on your forehead to show some bangs or a wave, and maybe a little hair around your ears.



1931

If your car is a 1931, you can pull it up a little on the left side, showing some of your hair.

And there you are, isn't it fun to be looking the part!



1931

How It Works – Part 22

Electrical Problems – Where are my 6 volts?

This month's article will be about how to diagnose some of the electrical problems in your car or pickup truck. The 6 volt battery system in the Model A Ford is sensitive to wiring size and connections, system components and ground paths. The following wiring info is applicable to the 1929-31 cars and pickup trucks with the Two-Light Headlight system, and may be applicable to some 1928-29 vehicles using the single bulb headlight. Problems encountered include such things as: a bad/discharged battery, defective parts (Starter, Ammeter, Coil, Points, Ignition Switch, Horn button contact), loose/no wire connection, bad wires and/or wiring mistakes. The most common problem is maintaining a good ground path.

Tools: A 6 volt test lamp and lamp socket, two 2' long test lead wires and two alligator clips. Solder each test lead to a lamp socket wire on one end and an alligator clip to other end.

Testing in "AS IS" condition (no tools needed):

1. Starter - Push on Starter rod, if engine turns over, then 6 volts present at Starter.
2. Starter - Push on Starter rod, if engine doesn't turn over, then suspect a bad/rundown Battery, defective Starter or there is a wiring or ground connection problem.
3. Ammeter - It should register Discharge when Starter is turning over or any electrical parts are turned ON. This also checks that the Safety Fuse (if installed) is OKAY.
4. Instrument Light - With lamp turned ON, lamp should light up.
5. Wiper Motor (if electric) - With motor turned ON, wiper should swipe.
6. Horn - When button is pushed and released, Horn should "Ahooga."
7. Headlight lights - With switch in Park, Dim or Bright positions, the correct lamps are ON.
8. Tail Light (Running) - With switch in Park, Dim, Bright, this Running light is ON.
9. Tail Light (Brake) - When Brake pedal is pushed, Brake light comes ON.
10. Ignition Switch/Points - Disconnect Distributor high tension wire from Distributor Cap and place end near (1/2") of the engine head. Turn Ignition Switch ON. Push on Starter rod, with the engine turning over a "spark" will occur between the wire end and the head as the Points close and open. If NO "spark" is seen then possible bad Coil, Ignition Switch or the Points are either not closing and/or opening.

Testing with a Test Lamp: (one lead on a good ground - car frame or engine)

1. Starter - Lead on Black Battery cable wire at Starter switch terminal, Lamp is ON.
2. Safety Fuse - Lead on Yellow wire at fuse terminal, Lamp is ON.
3. Terminal Box post (Driver's side) - Lead on Yellow wire on post, Lamp is ON.
4. Terminal Box post (Passenger's) - Lead on Yellow/Black tracer wire on post, Lamp is ON.
5. Generator Cut Out - Lead on Yellow/Black tracer wire at output terminal, Lamp is ON.
6. Coil Input post (-) - Lead on Black wire, Lamp is ON.
7. Coil Output post (+) - Lead on Red wire, Lamp is ON. May be slightly dimmer.
8. Coil Output post (+) - Lead on Red wire, Ignition Switch in ON, step on Starter rod, as engine turns over, Lamp goes ON and OFF as the Distributor Points Close and Open.

After Testing:

1. Verify Ignition Switch is in OFF position.
2. Verify Instrument Lamp is turned OFF.
3. Verify Light Switch is in OFF position (at 6 o'clock).
4. Verify Brake pedal is retracted and Brake Tail Light is OFF.
5. Verify Safety Fuse has been PULLED, if a Safety Fuse assembly is installed.

Submitted by Tom Eldhardt

Meeting Minutes

March 12, 2015

The Model "A" Club's monthly meeting was opened by president, Marshall Hauck and attended by Garry and Joanne Bryan, Jan and Mara Jackson, Tom Eldhardt, Frank and Laura Osterwyk, Sharon Hauck, Mary Fraser, Rick and Janet Budzeck, Pete and Grace Jackson, Blaine and Bev McGillicuddy and John Trumbo with daughter, Joy, and mother, LaVerne. Marshall introduced guest, Bob Bryce, who explained the history behind his father's 1916 Model T that is 'For Sale'. Bob stated the vehicle has all of its parts except for a headlight, plus some extra parts. He asked for guidance in setting a fair price for the vehicle, after which club members provided various suggestions, but in the end recommended he contact the Model T Club. Due to the absence of the treasurer, no report was provided.

Correspondence: Mara reported she received letters informing us of: (a) the new Sunnyside Model A Club (b) Ki-Be All School Reunion Show & Shine Car Show set for Saturday, May 23rd from 10:00 a.m. to 3:00 p.m. and (c) the Corvallis Swap Meet hosted by the Enduring "A's" on Sunday, April 26th, beginning at 7:00 a.m.

Sunshine: Bev stated she mailed a Get Well card to Dave Hannah, who is improving after suffering a heart attack.

Tours: Jan provided details on the tour this Saturday to Heppner for the 'Wee Bit O' Ireland' celebration. Those planning to go should meet at the Flashcube Building at 8:45 a.m. for departure at 9:00 a.m. and be sure to wear something green. Plans are to leave Heppner at 2:30 p.m. for the return trip. John commented on the Old Car Hobby class he will be teaching beginning Monday, April 13th for four consecutive Mondays. For the REACH tour set for Wednesday, April 15th, Tom reported those participating should meet at Rosie's Diner at 11:00 a.m. for lunch and then afterwards proceed to the museum. Jan then commented the Tri-Tech tour set for Thursday, April 30th will begin at 9:30 a.m. Rick reported on the available days and times to sort food for 2nd Harvest. Members concurred the best day and time would be Wednesday, April 22nd from 9:00 a.m. to 12:00 p.m. Those who wish can then proceed to The Country Mercantile for lunch. Janet commented on a tour she and Rick would lead to the new Washington State University Wine Center building and asked what would be a good date to do this. It was decided Friday, May 22nd would work best. After the tour, those participating will proceed to That Place for lunch. John asked if members would be interested in an overnight tour to Hood River July 10-11 for their museum blow-out weekend. If you are interested, please contact John.

Old Business: Marshall commented on the proposed revisions to the club's by-laws. After some discussion, a motion was made, seconded and passed approving the revisions. Jan explained the two car games our club will be responsible for at the upcoming regional meet in Walla Walla. He stated that the Yakima Club will be helping us by also doing two car games of their choice.

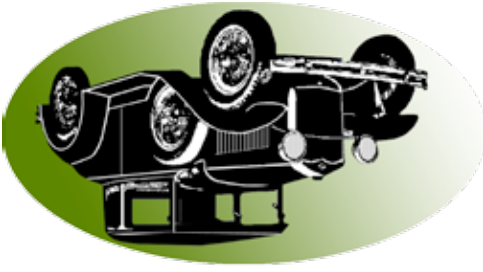
New Business: Mara remarked there are extra calendars from previous years for anyone to take if they want one. Mary stated she has quite a few Model A books she will be donating to the Walla Walla club for their raffle table at the regional meet. John informed the members there are several good articles in the current *Restorer* and highlighted two articles in particular. He encouraged members to subscribe to the *MAFCA A-World*, a free quarterly publication, to help inspire future generations to get involved. He also recommended members check out the MAFCA web site.

Announcements: Marshall recognized those celebrating birthdays and anniversaries, highlighting the fact that Walteen Corson will be 90 on April 22nd and she and John will be celebrating their 61st anniversary on the 21st. He thanked Blaine and Bev for providing the refreshments.

Projects: John said his station wagon is running. Tom remarked he has the title for two of his cars and a provisional title for the other four. Jan reported he found a bad shock when working on his car and after great difficulty he finally found one from a gentleman in Pendleton.

A motion was made, seconded and passed to adjourn the meeting.

Respectfully submitted by Janet Budzeck, Secretary



Columbia Basin Model A Club
703 S. 48th Ave.
West Richland, WA 99353

The Columbia Crier is a publication of
the Columbia Basin Model A Club. For
questions or submittals to the Columbia
Crier contact Jan Jackson by email at:
j-m.jackson@frontier.com or by phone:
(509) 967-2801.