

# Columbia Crier

A Publication of the Columbia Basin  
Model A Club  
Tri-Cities, Washington



<[www.cbmac.org](http://www.cbmac.org)>

Volume 48 Issue 4 April 2018

## Inside Features:

- Dinner & A Play
- Restoration Projects
- Tour Schedule
- Cherry Blossom Tour
- Fashion Feature
- MAFCA News
- True or False?

## Meeting Location:

Reata Springs Baptist Church  
2830 Leopold Lane, Richland, WA  
April 12th, 7:00 p.m.



Tom and Robin Eldhardt are touring along the Yakima River with their 1930 all original Tudor, Bob. The Yakima River is meandering behind them.



## Leadership

President:	Larry Campbell	783-5864
Vice President:	Marshall Hauck	783-1444
Secretary:	Janet Budzeck	943-2522
Treasurer:	Blaine McGillicuddy	627-1254
Historian:	Tom Eldhardt	967-3081
Correspondence:	Mara Jackson	967-2801
Sunshine:	Bev McGillicuddy	627-1254
Editor:	Jan Jackson	967-2801
Web Master:	William Sperry	572-2459
Restorer:	Robin Eldhardt	967-3081

## Meeting Schedule

January:	Canceled
February:	Larry & Sue Campbell
March:	Tom & Robin Eldhardt/ Mary Fraser
April:	<b>Bruce &amp; Shelley Clark</b>
May:	Rick & Janet Budzeck
June:	John & Thora Trumbo/ Pete & Grace Jackson
July:	Club Members - Potluck
August:	Open
September:	Calvin & Vernita Coffey
October:	Jan & Mara Jackson
November:	Blaine & Bev McGillicuddy
December:	Christmas Brunch

## Ladies Lunch

The ladies lunch will be held on April 4 (Joanne's birthday), 12:30 PM, at the Country Mercantile located on Dallas Road. If you're planning to attend, please call Vernita at 947-2668 so she can add you to the RSVP list.

### Birthdays

<b>Becky Vandevord</b>	<b>3rd</b>
<b>Joanne Bryan</b>	<b>4th</b>
<b>Dave Hannah</b>	<b>12th</b>

### Anniversaries

<b>Pete &amp; Grace Jackson</b>	<b>5th</b>
<b>Rick &amp; Janet Budzeck</b>	<b>6th</b>
<b>Tom &amp; Robin Eldhardt</b>	<b>16th</b>

## Larry's Lessons



First I would like to thank guest Gary Miller for coming to the March meeting and telling us about his Model A trip from Washington to Central America in 1949.

Also thanks to Marshall and Sharon for arranging the outing to the Richland play.

It is that time of the year when I have been noticing certain signs and urges. The lawn needs mowing, the cherry tree is budding out and weather is variable but warmer. Spring is when a not so young man's, (sigh) fancy turns toward getting old Sparky on the road. In fact, it was that not so young wife, (sigh again) that suggested that I stop bothering her and check the lug nuts on the A.

There are various touring checklists available from the basics to multi-page detailed mechanical inspections. I start with the basics like tire pressure, alternator belt tension, gas in the tank, lights work. Then start Sparky up and drive a short distance listening for all the usual rattles and quirky handling with no new worrisome sounds and behaviors.

Looking forward to a great year.

## Larry Campbell

## Calendar of Events

Cherry Blossom Tour	April 20
Palouse Falls Tour	May 18
Club Birthday	June 7
MAFCA National Convention	June 24-29
Celebration Picnic	July 4
Hotter than Hades Tour	August 10-11
States Day Parade	September 3
International Model A Day	September 22
Goldendale Overnighter	October
Veterans Day Parade	November 10
Christmas Brunch	December 8

# Dinner & A Play

Marshall and Sharon Hauck planned a tour to Sterling's Restaurant for dinner and then, after a brief interlude, a trip to Richland to watch the Richland Player's production of, '**And The Winner Is.**'

The play tells the comic story of Tyler Johnes, a self-obsessed movie star, who is finally nominated for an Oscar, then dies the night before the awards. Outraged at his bad luck and determined to know if he wins (even though he's dead), he bargains with a heavenly gatekeeper to return to earth for the big night. Along the way, he drags his agent, his acting rival, his bombshell girlfriend and his ex-wife into the journey, in a wildly twisting tale of Hollywood, the afterlife, and how we are judged.

Attending the dinner and play were: Rick and Janet Budzeck, Larry and Sue Campbell, Tom and Robin Eldhardt, Marshall and Sharon Hauck and Jan and Mara Jackson.

Thank you to Marshall and Sharon for planning this event.

**Submitted by Jan Jackson**



## Food Drive



It is becoming more difficult to recruit members for the quarterly food sort at Second Harvest. So, it was decided to have a food drive instead.

The idea is to bring canned foods to a club meeting where they will be gathered, weighed and then distributed to a food bank or Second Harvest.

We will do this every meeting and at the end of the year we'll have a tally on how many pounds of food we delivered to the less fortunate.

## Sunshine Report

Long time member, John Trumbo, was at a meeting in Bellevue a few weeks ago and was having trouble climbing the stairs. He and Thora drove to Bellevue Overlake Medical Center where plugged arteries were discovered. Unfortunately, the plaque was at an intersection so stints weren't an option. Thirteen days and a triple bypass later, John was released and is at home resting.

John is still exhausted from this traumatic affront to his vascular system; however, he enjoys short interludes of conversation. Give John a call, tell him we're glad he's feeling better and wish him a speedy recovery.

**Submitted by Bev McGillicuddy**

# Cherry Blossom Tour

Join Mara and I on our first outing of the year, the Cherry Blossom Tour.

When: April 20th

Where: Meet at the Conoco Service Station at 10:00 a.m.

Who: All Columbia Basin Model A Club members and their guests

What: First Model A tour of the year

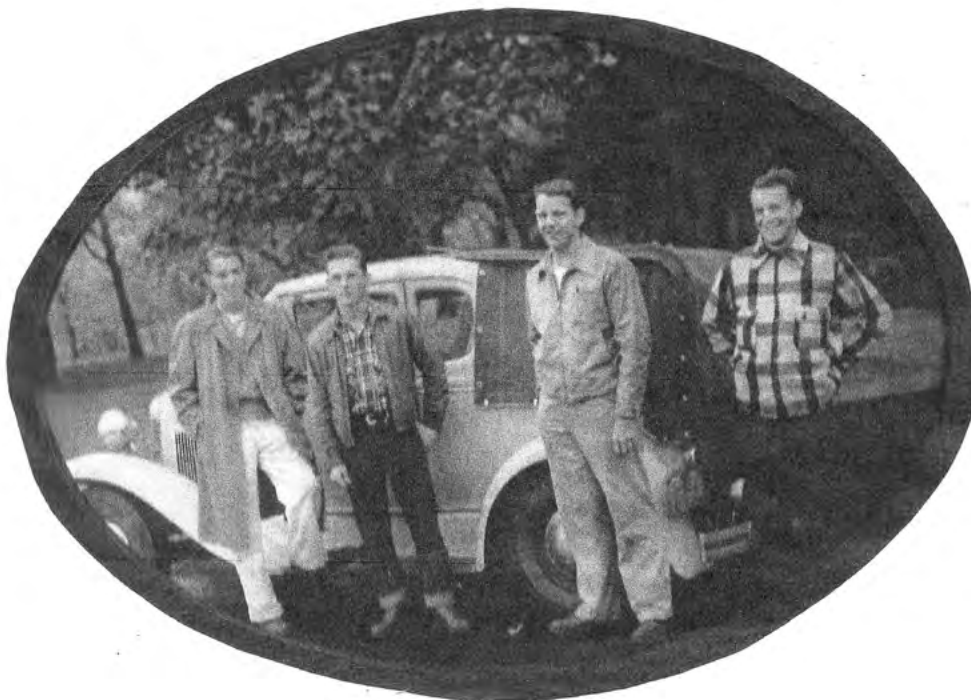
Why: Get your Model A's in shape for Reno and the rest of the year

We'll meet at the Conoco station in Benton City, right off the highway. From there we'll head down the Old Inland Empire Highway until the urge overtakes me and I turn off the highway. If you're afraid of getting lost, or don't like shortcuts, this tour isn't for you. We'll meander our way towards Prosser and end up at Wine O'Clock at Vintner's Village where we'll eat lunch. The tour back will be much the same only we'll be headed east instead of west.

I'll try to stick to the paved roads; however, sometimes the paved roads turn to gravel. This tour will be strictly seat of the pants without any notion of where we're going or what we'll see. This approach maximizes the element of surprise. Our chances of getting lost are pretty good!

Let Jan or Mara know you're coming by April 18th, you don't want to be left behind!

***Submitted by Jan Jackson***



*Photo Left: Guest Gary Miller shared his experiences in 1949 when he and three friends planned to travel in a Model A Coupe from Yakima, Washington to Venezuela to work.*

To accommodate four guys, they added a rumble seat and during the course of the trip rotated seating. After 12,000 miles and many stories to tell, they ended their excursion in Guatemala City with no passports and very little money. This is where they decided to turn around and head back home. They were gone from the middle of October to the middle of January.

# Fashion Feature

Fashions of the Model A Ford Era

## Fashion 101

Men's bow ties are a thing of beauty, but even the most adept man may have a problem getting tied properly. The Spur Tie Company advertised their product in the 1928 Saturday Evening Post. The tie was adjustable and could be donned with a moment's notice.

Submitted by Robin Eldhardt

## True or False?

- The Drag Link connects the Pitman Arm to the left hand side front most arm of the double arm Steering Arm unit.
- Pushing on the Horn button supplies a negative (-) 6 volts to one side of the Horn motor sounding the Horn since the other side is already grounded to the Frame.
- The Cam shaft rotates at twice the speed as the crankshaft.
- The original tire tubes came without valve stems and had to have a metal valve stem assembly installed into them prior to their insertion into a tire.
- Putting an original Gas cap on the Radiator will cause it to overheat.
- The Firewall to Radiator rods are installed to keep the Hood from falling onto the Engine.
- Vehicles came with vacuum or electric operated windshield motors.

### ANSWERS

TRUE – The Drag Link is connected between the Pitman Arm at the rear and the left hand side front most arm of the double arm Steering Arm unit attached to the left front Spindle.

FALSE –The Horn coil is supplied on one side by a negative 6 volts (-6v) from a wire connected to the Generator. The other side of the Horn coil is connected to a wire running to the Horn Button. The Horn button when pushed grounds the Horn coil.



FALSE – The Cam Shaft rotates at one-half (1/2) the speed of the Crank Shaft. The Cam Shaft gear is twice the size of the Crank Shaft gear.

TRUE - The original tire tube had to have a metal valve stem assembly installed into it prior to its installation in a tire.

FALSE – Although the original Radiator Cap did not have a vent hole in it, since the cooling system was not pressurized, having a vented cap should not be a problem since the overflow tubing is lower in the Radiator.

FALSE – These rods are the Radiator support rods installed to hold the top of the Radiator in place and are also used for Hood alignment/fit.

TRUE – Ford tried several types and makes of Windshield Wiper motors on the various body styles. A check of the Judging Standards is required to determine which type of Windshield Wiper motor is applicable for your specific body style for the determined year and month of manufacturer.

Submitted by Tom Eldhardt

# Restoration Projects

## Model A Ford Repair & Restoration – Shock Absorber

The operation of a Shock Absorber is determined by the flow of the fluid between the two chambers that are divided by the solid/fixed vanes. The fluid is pushed by the rotation of the Wing Shaft movable vanes and regulated by the Needle Valve. When the Shock Absorber Arm is traveling in the UP direction the fluid flow is restricted by how far the Needle Valve is open and the ball valve holes in the fixed vanes. When the Shock Absorber Arm is traveling in the DOWN direction the fluid flow is only restricted by how far the Needle Valve is open as the balls in the ball valve holes in the fixed vanes are seated blocking off the fluid passages.

***The first steps are to ensure that the Shock Absorbers, Reservoir Covers and Arms are correctly installed, are as follows:***

1. The Shock Absorbers have two mounting ears that are located above the Center Line of the Shock Absorber's body.
2. The Shock Absorbers have a Filler Plug that is to be located in the upper section of the Reservoir Cover. For CW (Clockwise) rotating Shock Absorbers the Filler Plug is at 20° to the left of the vertical Center Line. For AC (Anti-Clockwise) (or in today's terminology Counter Clockwise) the Filler Plug is at 20° to the right.
3. Ensure that the Shock Absorbers are full of fluid. NOTE they are really slow to fill.
4. The bolt that is used to secure the Arm to the Wing Shaft is located on the same side as the Filler Plug. For CW Shock Absorbers the Arm bolt should be at the 9 o'clock position. For AC Shock Absorbers the Arm bolt should be at the 3 o'clock position.
5. Shock Absorbers that are marked on the Reservoir Cover as being CW are to be mounted at either the Right Front (passenger's side) or Left Rear.
6. Shock Absorbers that are marked on the Reservoir Cover as being AC are to be mounted at either the Left Front (passenger's side) or Right Rear.

***Adjust the Shock Absorbers per the following steps for proper operation:***

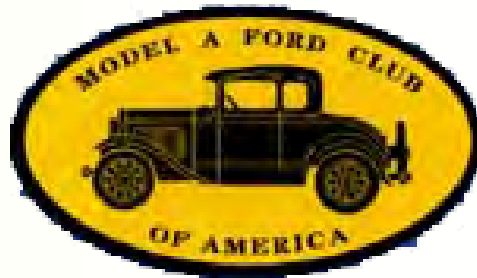
1. Make sure that the Shock Absorbers are mounted tightly to the vehicle's Frame.
2. Remove the Shock Link from the Shock Absorber by removing the cotter pin and screwing the top plug completely out. This will loosen the internal spring and allow the Shock Link to be removed from the Arm ball and from the Spring Perch ball.
3. Push the Arm fully DOWN then push the Arm UP quickly. Repeat this step 3 – 4 times. NOTE any differences in resistance to the UP and DOWN strokes.
4. If little or no resistance is encountered on the DOWN stroke, then screw the Needle Valve all the way in clockwise, and repeat the previous step.
5. The resistance of the UP stroke (40%) is considerably less than the DOWN (60%) stroke.
6. The normal setting for the Needle Valve is about 1/4 turn open from full closed. It is to be adjusted to the requirements of the owner depending on the ride they desire.
7. Reinstall the Shock Link in reverse order of step 2.

***Submitted by Tom Eldhardt***



# MAFCA News

The March/April, 2018, edition of The Restorer Online, a web-based version of MAFCA's award-winning magazine, is now available free to all members. You can read it on any computer that connects to the Internet, on a tablet, or a smart phone. If you provided MAFCA your email address when you renewed your membership, you should have already received an email with the news of the latest edition. Click on the picture of the magazine cover in the email and login with your email address as the User name. The password is your MAFCA membership number BUT it must be 6-digits long. Add a leading zero if your membership number is less than 99999.



If you did NOT receive an email announcing this latest edition of the online magazine and you'd like to get them in the future, we need to add you to the distribution list. Send your name, member number, and email address to the MAFCA office at [info@mafca.com](mailto:info@mafca.com) and you will get the announcements for future issues. Full instructions for accessing The Restorer Online can be found by [clicking here](#).



Check out the latest information on the 2018 MAFCA National Convention. Click on the logo to obtain up to date information about the convention.



**MAFFI Minute:** We will be ordering bricks at the end of May for installation at the museum before 2018 Model A Day. If you have been thinking about ordering a brick 'In Memory' or 'In Honor' of someone near and dear to you, or if your club/region doesn't have a brick at the museum with its name on it, now would be a great time to do it. Each brick is \$150 and the form can be found at [www.maffi.org](http://www.maffi.org). Our website has changed and the brick order form can be found under the tab "Store." Don't forget to send the check and form to our new address:



MAFFI  
P O Box 28  
Peotone, IL 60468-0028

If you have any questions, please feel free to contact me at [clubcontact@maffi.org](mailto:clubcontact@maffi.org)  
As always, we appreciate your continued support.

**Marsha Quesnell, MAFFI Trustee**

*The purpose of the club shall be to serve as a medium of exchange of ideas, information and parts for admirers of the Model A Ford, and to aid them in their efforts to restore and preserve the car in its original likeness. Membership in the Model A Ford Club of America is a requirement to joining the Columbia Basin Chapter. To join MAFCA, see the web site at [www.mafca.com](http://www.mafca.com) and click on the "Join MAFCA" tab. Requirements for membership in the chapter shall not insist upon the actual possession of a Model A Ford, merely an interest in the objectives of the club and a desire to take an active part in club activities shall be the primary requirement for membership. (Excerpt from Columbia Basin Model A Club Bylaws dated February 2015.)*

# Meeting Minutes

**March 8, 2018**

The monthly meeting was brought to order by president Larry Campbell and attended by Blaine and Bev McGillicuddy, Bruce and Shelley Clark, Tom and Robin Eldhardt, Marshall and Sharon Hauck, Sue Campbell, Mike and Linda Porter, Mary Fraser, Rick and Janet Budzeck and guest, Gary Miller. The minutes from the February meeting were approved with a motion and the treasurer's report was provided by Blaine.

**Correspondence:** Janet reported that Mara received an e-mail from the MAFCA National Convention organizers thanking our club for the raffle donation. She also received a letter from the Corvallis Model A Club informing us of their 52nd annual Antique Auto Swap Meet and 2nd annual Dust'em Off Car show set for Sunday, April 22nd.

**Sunshine:** Bev stated she sent a sympathy card to Joanne Bryan for Garry's passing and a get well card to John Trumbo for his by-pass surgery.

**Tours:** Marshall highlighted the Palouse Falls tour set for Friday, May 18th, and informed those present that a \$10.00 fee will be charged to enter the park. On May 26th, Benton City will be holding their annual Classic Car Show & Shine. If you choose to go and register your car, the cost is \$15.00, which includes two tickets to their community potluck. Sharon reminded club members to let them know by Thursday, March 15th, if you plan on going to the dinner and play on Friday, March 23rd.

**Old Business:** Larry urged members to let Jan Jackson know if they want to order a new polo shirt in Maui Blue or white. Additional details are included in the March newsletter. Please let him know by Friday, March 23rd.

**New Business:** Larry suggested that our club consider making Pete and Grace Jackson life time members of the club. He shared what the by-laws say regarding this designation and then asked for members to share what they thought. A motion was made, seconded and passed approving the life time membership. Larry also mentioned there is no host for the April meeting, to which Bruce and Shelley volunteered to fill the vacancy.

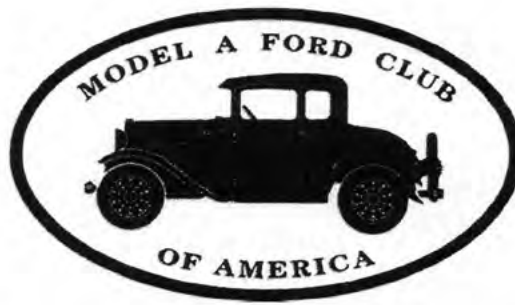
For this month's meeting, guest Gary Miller shared his experiences in 1949 when he and three friends planned to travel in a Model A Coupe from Yakima, Washington to Venezuela to work. To accommodate four guys, they added a rumble seat and during the course of the trip rotated seating. After 12,000 miles and many stories to tell, they ended their excursion in Guatemala City with no passports and very little money. This is where they decided to turn around and head back home. They were gone from the middle of October to the middle of January.

**Projects:** Mary remarked the Model A pick-up they owned when Fred was alive was now going to be in the Hood River Air Museum. The couple who purchased it from the Fraser's donated it to the museum because they moved into an assisted living complex and could no longer keep the truck.

Larry thanked Tom, Robin and Mary for the refreshments. With no further business, a motion was made, seconded and passed to adjourn the meeting.

**Respectfully submitted by Janet Budzeck, Secretary**





## Free USA Membership Application 2018

*Please Print*

**Name:** \_\_\_\_\_

**Spouse:** \_\_\_\_\_

**Address:** \_\_\_\_\_

**Country:** \_\_\_\_\_

**City, State/Province:** \_\_\_\_\_

**Telephone:** \_\_\_\_\_

**Zip Code:** \_\_\_\_\_

**Email:** \_\_\_\_\_

I give MAFCFA permission to publish my phone number in future membership rosters.

Circle One  
Yes      No

**Optional Initiation Package \$11.00  
Plus Shipping Charge**

One Back Issue of *The Restorer*  
One Lapel Pin  
One MAFCFA Window Decal  
One Name Badge

**Additional Items Of Interest  
Plus Shipping Charge**

Denim Baseball Cap...\$15.00  
Spill Proof Travel Mug...\$10.00  
MAFCFA Afghan...\$39.00  
Model A Bank...\$25.00

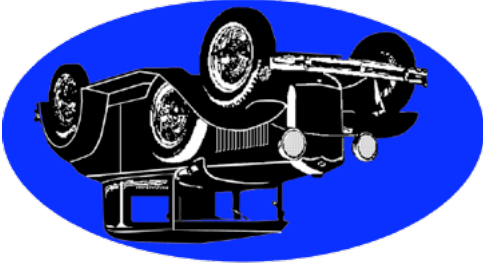
Item Description	Quantity	Unit Price	Total
2018 USA MAFCFA Membership Online Edition	1	\$0.00	0.00
Mechanics Handbook Vol. 1 by Les Andrews		38.00	
Coupe Book		24.95	
Coupe Book + Polo Shirt Circle Size S M L XL		45.00	
Shipping Charges...Up to \$10.00=\$5.75 / \$10.01-\$23=\$9.85 / \$23.01-\$50.00=\$11.95 / 50.01-\$100=\$14.25			
<b>Total Purchase</b>			

**Visit [mafca.com](http://mafca.com) to view our entire store**

### Requirements For Free Membership

- Only families never having held membership in MAFCFA may apply for free membership
- Free membership includes *The Restorer* magazine from the time the application is received by the office. Past issues may be purchased at the regular price depending on availability.

**Return Free Membership Form To MAFCFA 250 So. Cypress, La Habra, CA 90631-5515  
Questions: 562-697-2712**



Columbia Basin Model A Club  
703 S. 48th Ave.  
West Richland, WA 99353

The Columbia Crier is a publication of  
the Columbia Basin Model A Club. For  
questions or submittals to the Columbia  
Crier contact Jan Jackson by email at:  
j-m.jackson@frontier.com or by phone:  
(509) 967-2801.