

Columbia Crier

A Publication of the Columbia Basin
Model A Club, Tri-Cities, Washington



Volume 46 Issue 12 December 2015

<www.cbmac.org>



Inside Features:

- Veterans Day Parade
- Fashion Feature
- Christmas Brunch
- Restoration Projects
- MAFCA News

Meeting Location:

Meadow Springs Country Club
700 Country Club Road, Richland, WA
December 12th, 9:00 a.m.



Garry and Joanne Bryan are with their 1929 Model A Ford Roadster, Clarabell, in West Richland, Washington.



Leadership

President:	Marshall Hauck	783-1444
Vice President:	Jan Jackson	967-2801
Secretary:	Janet Budzeck	943-2522
Treasurer:	Vernita Coffey	947-2668
Historian:	Tom Eldhardt	967-3081
Correspondence:	Mara Jackson	967-2801
Sunshine:	Bev McGillicuddy	627-1254
Editor:	Jan Jackson	967-2801
Web Master:	William Sperry	572-2459
Restorer:	Robin Eldhardt	967-3081

Meeting Schedule

January:	Tom & Robin Eldhardt/Mary Fraser
February:	Dean & Teri Hinkson
March:	Blaine & Bev McGillicuddy
April:	Rick & Janet Budzeck
May:	Pete & Grace Jackson
June:	Garry & Joanne Bryan
July:	Club Members Potluck
August:	Jan & Mara Jackson
September:	William & Emilia Sperry
October:	Frank & Laura Osterwyk
November:	Calvin & Vernita Coffey
December:	Christmas Brunch

Calendar of Events

MAFCA Annual Awards	Dec 3-5
Christmas Brunch	Dec 12
2nd Harvest	Jan TBA

“When I can’t handle events, I let them handle themselves.” Henry Ford

BIRTHDAYS

JANET BUDZECK	2ND
THORA TRUMBO	5TH
TERI HINKSON	11TH
SHARON HAUCK	27TH
RANDY BUNCH	27TH
TOM ELDHARDT	28TH

ANNIVERSARIES

BLAINE & BEV MCGILICUDDY 27TH

Message from the Prez

Can you believe that it is the Holiday Season already?

I heard Christmas carols in stores around the first of November!

Well, Bev and Blaine are on top of it and have our club brunch planned for Saturday morning, December 12. Check the article in this newsletter for more details about gift sharing, etc.



During our brunch we will have a brief club meeting to elect our officers for 2016. The nominations are Jan Jackson, President; Bev McGillicuddy, Vice President; Janet Budzeck, Secretary and Vernita Coffey, Treasurer. You can make additional nominations at the meeting.

This is a good time to make up that list of projects for your Model A during the “off” season. I have several projects on my list. Some have been there for many years! “Off” season doesn’t mean you can’t drive your Model A. They perform very well in the cooler weather and do just fine in the snow. I know first hand. The first year I had our Model A, 1961, I took it to college with me for the winter. This involved an eight hour+ trip in the snow from Portland to Moscow. Well, the car and I spent the winter in Moscow, Idaho with the car parked on the street in snow and sub-zero temperatures. I even had a set of chains! Often, the Model A would be the only car we could get started! (Sometimes with a shove).

Just don’t forget to prepare your car for winter especially if it will be subjected to temperatures below freezing or left out of doors.

We will see you at the Christmas brunch.

Marshall Hauck

Ladies Lunch

The monthly ladies luncheon will not be held in December. The next luncheon is January 6th, 12:30 p.m., at the Grill on Gage, 8524 W. Gage Boulevard, Kennewick.

Veterans Day Parade



The annual West Richland Veterans Day Parade was on November 7th. The parade started at 9:30, which is about the time Don and Marti Meyers ambled into the Model A section of the parade route. After pushing Alyce Thompson's blue bomb and successfully jump starting it, we were on our way! We paraded two by two, honking waving and generally acting like the young kids we really are at heart. As you can tell from the photos, it was a cold and rather foggy day.

After the parade we met just around the corner and up the hill at Jan and Mara's place for chili, corn bread and fixins. We also held our meeting at that time which you can read about in the minutes section of the newsletter. Columbia Basin Model A Club members included: Budzecks, Bryans, Eldhardts, Haucks, Jacksons, McGillicuddys, Meyers and Alyce Thompson with son, Conne r.



Photos above include a group shot without Don and Marti Meyers who arrived late and Conner Budzeck who was off drinking cocoa at the Moose Lodge. The middle photos were taken by Tom Eldhardt who was watching and recording the parade from the sidewalk. The bottom photo shows Don Meyers smiling behind the wheel of his Model A.

Fashion Feature

Fashions of the Model A Ford Era

Fashion 101

By August 1930, the dress and coat patterns were becoming more distinct as noted in the *Fashions For All* magazine cover shown.

The tied belt used to emphasize the waist in the patterned brown, one-piece dress with matching jacket pattern, has an uneven hem line.

The red below-the-knee dress with the white v-neck overlay piece is of a beltless design.

The white, two-piece dress, with the one-button blouse, complementing belt, and green jacket really makes a statement.

Stylish hats in matching colors are shown with all three dress design patterns.

Submitted by Robin Eldhardt



Christmas Brunch

Blaine and Bev McGillicuddy have graciously arranged to have our annual Christmas meeting at Meadow Springs again this year. The meeting and brunch will be held Saturday, December 12th, at 9:00 a.m. The cut off date to confirm your attendance is Friday, December 4th.

The annual Chinese gift exchange will be held after breakfast. Don't forget, women bring a woman's gift and men bring a man's. Please clearly mark the gift by gender. Gift value is a \$10 minimum. We will follow our past rules of drawing for choosing order. The #1 person gets to choose again at the end of the exchange.

Please plan to arrive at Meadow Springs Country Club by 9:00 a.m. as the breakfast buffet will be served at 9:15 a.m. The cost of the brunch is \$20.79/person; however, the club will pay for one-half of the cost of the meals.

Country club dress code - no blue jeans allowed.

Jan and Mara will distribute the 2016 calendars prior to breakfast. The cost of each calendar is \$9.25 this year. To confirm your participation, or if you have any questions regarding the brunch, please contact Bev at 627-1254.

Submitted by Mara Jackson

Dues are Due

Please bring your dues to the Christmas brunch at Meadow Springs. The cost is still \$10 for a couple or \$5 for an individual.

Restoration Projects Submitted by Tom Eldhardt

Ball & Hyatt Bearings – Transmission

This article is for the replacement of the two Ball bearings and the three Hyatt Roller bearings that are located inside of the Transmission housing. The Main Drive Gear shaft is also known as the Transmission Pilot Shaft.

Ball bearing locations (2) –

1. On the Main Drive Gear shaft in front of the gear and held in place by the Retainer Tube.
2. On the Main Shaft (rear end). Front end of shaft held by Hyatt Roller bearing #1 below.

Hyatt Roller bearing locations (3) –

1. Bearing (short) fits inside of the Main Drive Gear shaft and on the front end of the Main Shaft.
2. Bearing (short) is internal to the Cluster Gear (large end).
3. Bearing (long) is internal to the Cluster Gear (small end).

The major steps and parts needing removed are listed below. Reassembly of removed parts includes an inspection of all sub-parts and replacement of damaged/defective parts. Replace gaskets and bearings as the assemblies are being put back together. Ensure all shaft/bearing spacers and shims are properly installed. Verify all bolts/nuts are tight, torqued and Safety Wired, as needed. Ensure that the Transmission is refilled with a 600W or equivalent fluid. For shielded bearings: Remove the shielded side that faces the Transmission (internal side) to allow for automatic lubrication. Paint the outsides of the Transmission and tower housing (green) prior to reassembly.

ENGINE REMOVAL METHOD –

1. REMOVE the two Floorboards and DISCONNECT/REMOVE the Battery cables and the Battery.
2. REMOVE the Hood and the two Radiator support rods.
3. DISCONNECT and PULL back the wiring to the Headlights and Horn.
4. DRAIN the Radiator, then REMOVE the two Radiator hoses and the Radiator.
5. DISCONNECT/REMOVE wiring to Generator, Starter, Terminal Box and Distributor.
6. DISCONNECT fuel tubing to Carburetor at Fuel Bowl and DISENGAGE Choke Rod assembly.
7. UNBOLT engine at the front cross member, two back engine mounts and from the Bell Housing.
8. SUPPORT the Transmission on a jack and then PULL/LIFT the engine from the car/truck.
9. SUPPORT the Drive Line housing (tube) behind the Transmission.
10. DRAIN the Transmission fluid.
11. DISCONNECT the Emergency Brake to Cross arm rod and REMOVE the Emergency Brake handle.
12. DISCONNECT the Brake Pedal to Cross arm rod.
13. UNBOLT the Universal Joint cover bolts and REMOVE the two-piece cover.
14. UNBOLT/REMOVE the Shift Tower assembly and COVER the exposed hole.
15. REMOVE the Transmission and Bell Housing from the car/truck
16. UNBOLT the Transmission from the Bell Housing and REMOVE the Bell Housing.

TRANSMISSION DISASSEMBLY –

1. UNBOLT/REMOVE the Universal Joint from the Main shaft. (Special tabbed washer).
2. UNBOLT/REMOVE the Rear Bearing Retainer. (4 fine threaded, Safety-wired bolts).
3. UNBOLT/REMOVE the Main Drive Gear shaft Retainer Tube.
4. REMOVE the Main Drive Gear shaft with attached Ball bearing #1, and Hyatt Roller bearing #1.
5. PULL OUT the Main Shaft with attached Ball bearing #2, through the 2nd/3rd and the 1st/REV gears.
6. REMOVE the 2nd/3rd and the 1st/REV gears from the Transmission housing.
7. UNBOLT/REMOVE the Reverse Idler shaft/Cluster Gear shaft Retainer Plate.
8. PULL OUT the Reverse Idler shaft and REMOVE the Reverse Idler gear.
9. PULL OUT the Cluster Gear shaft and REMOVE Cluster gear and shims/spacers, if present.
10. REMOVE the Hyatt Roller bearings #2 and #3 from the Cluster Gear.

MAFCA News

Articles obtained from the MAFCA web site



Membership Roster:

There's only a few more weeks to pre-order your 2016 MAFCA Membership Roster for \$15 postpaid (International \$19 postpaid). After December 31, 2015, the price won't include the postage.

The Membership Roster is a MUST to take with you when you're traveling in your Model A. If you ever have a breakdown on the road, the Roster will allow you to find fellow MAFCA members nearby to help you find parts or to get you back on the road. Don't wait: pre-order today from the MAFCA store: https://mafca.com/cart/index.php?show_price=yes%22

2016 National Convention:

Hosted by the Model A Ford Club of Colorado in Loveland, Colorado, June 19-24, 2016. Registration materials and full descriptions of events and activities will be published in the January-February 2016 issue of *The Restorer* magazine and also available for download from their web site. Please go to their web site www.MileHighCountry2016.org for event and hotel information.

A Note from MAFFI:

The Model A Ford Museum has had a great year and we thank all of you and your local Model A clubs for supporting the museum through your gifts and visits.

Are you looking for a unique Christmas gift for your special Model A'er? A MAFFI membership would make a thoughtful holiday gift for anyone with interest in the Model A Ford. This gift provides a real "win-win" situation – an appreciated gift for the recipient and a welcomed MAFFI donation on behalf of the giver. Check out www.maffi.org <http://www.maffi.org/> for application and the benefits of membership. Thank you.

Marsha Quesnell, Trustee

Merry Christmas



The purpose of the club shall be to serve as a medium of exchange of ideas, information and parts for admirers of the Model A Ford, and to aid them in their efforts to restore and preserve the car in its original likeness. Membership in the Model A Ford Club of America is a requirement to joining the Columbia Basin Chapter. To join MAFCA, see the web site at www.mafca.com and click on the "Join MAFCA" tab. Requirements for membership in the chapter shall not insist upon the actual possession of a Model A Ford, merely an interest in the objectives of the club and a desire to take an active part in club activities shall be the primary requirement for membership. (Excerpt from Columbia Basin Model A Club Bylaws dated February 2015.)

Meeting Minutes

November 7, 2015

After several club members drove their Model A's in the Veterans Day parade, they proceeded to Jan and Mara Jackson's home for homemade chili and side dishes. The monthly meeting was opened by president Marshall Hauck and attended by Blaine and Bev McGillicuddy, Garry and Joanne Bryan, Tom and Robin Eldhardt, Rick and Janet Budzeck, Alyce Thompson and son, Conner, and Sharon Hauck. The minutes from the October meeting were approved as posted and the treasurer's report was provided by Mara.

Correspondence: Mara stated she received a request from MAFFI asking for donations to help with upkeep of the new museum. Jan suggested we find out what amount our club donated last year and then do the same. After brief discussion, those present approved the suggestion. Mara volunteered to check with Vernita Coffey and inform her of the club's decision.

Sunshine: Bev remarked she sent a 'Thinking of You' card to Frank Osterwyk. Sharon mentioned that Sue Campbell recently had surgery, so Bev will send her a card.

Tours: Jan commented on the tour to Hat Rock Park and reported the Christmas Brunch at Meadow Springs Country Club is set for Saturday, December 12th. Bev will check with the country club for the exact time and let Jan and Mara know for the newsletter. Rick asked if the club was going to pay half of the cost of the meal as it has done in the past. A motion was made, seconded and passed that the club continue to do this.

Old Business: Marshall reported he had spoken to the current treasurer, secretary and correspondence individuals, who had all agreed to retain their positions for the next year. He then asked for nominations for president and vice president. Jan Jackson was nominated and agreed to serve as president. Since there were no nominations for vice president, Marshall and Jan will contact some of the other members not in attendance to see if one of them would be willing to serve. Rick volunteered to accept the position if the search was unsuccessful. The final election of officers will take place at the December meeting.

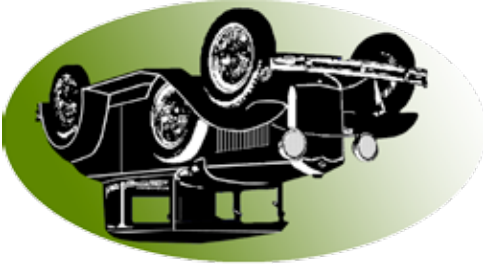
Marshall commented on the national meet in Colorado next year and encouraged members to make their reservations soon even if they were undecided whether to attend or not since the hotels are filling up fast. You can check with the MAFCA web site, which has a link to the national meet, or you can obtain the link address in our club newsletter.

New Business: Mara stated seven women attended the monthly luncheon on Wednesday and she wondered if the club women would like to meet in December or wait and meet again in January. Consensus was to wait until January.

Announcements: Jan reported he is currently working on the club calendar, which will be available at the Christmas brunch. He circulated a copy of the calendar and asked those present to check and make sure their birthdays and anniversaries were correct and indicate next to their name how many calendars they would like to order. Although Jan did not have a definite cost, he stated it would probably be about the same as last year.

Marshall recognized those celebrating anniversaries this month (no one had a birthday) and thanked Jan and Mara for opening their home and hosting the chili feed. A motion was made, seconded and passed to adjourn the meeting.

Respectfully submitted by Janet Budzeck, Secretary



Columbia Basin Model A Club
703 S. 48th Ave.
West Richland, WA 99353

The Columbia Crier is a publication of
the Columbia Basin Model A Club. For
questions or submittals to the Columbia
Crier contact Jan Jackson by email at:
j-m.jackson@frontier.com or by phone:
(509) 967-2801.