

Columbia Crier

A Publication of the Columbia Basin
Model A Club, Tri-Cities, Washington



Volume 46 Issue 1 January 2016



www.cbmac.org

Inside Features:

- Christmas Brunch
- Fashion Feature
- Frank Osterwyk Memorial
- Restoration Projects
- MAFCA News

Meeting Location:

Reata Springs Baptist Church
2830 Leopold Lane, Richland, WA
January 14th, 7:00 p.m.



Jan and Mara Jackson are on tour at Wallowa Lake, Oregon with their 1930 Model A Sport Coupe.



Leadership

President:	Jan Jackson	967-2801
Vice President:	Bev McGillicuddy	627-1254
Secretary:	Janet Budzeck	943-2522
Treasurer:	Vernita Coffey	947-2668
Historian:	Tom Eldhardt	967-3081
Correspondence:	Mara Jackson	967-2801
Sunshine:	Bev McGillicuddy	627-1254
Editor:	Jan Jackson	967-2801
Web Master:	William Sperry	572-2459
Restorer:	Robin Eldhardt	967-3081

Meeting Schedule

January:	Tom & Robin Eldhardt/Mary Fraser
February:	Dean & Teri Hinkson
March:	Blaine & Bev McGillicuddy
April:	Rick & Janet Budzeck
May:	Pete & Grace Jackson
June:	Garry & Joanne Bryan
July:	Club Members Potluck
August:	Calvin & Vernita Coffey
September:	William & Emilia Sperry
October:	Frank & Laura Osterwyk
November:	Jan & Mara Jackson
December:	Christmas Brunch

Calendar of Events

Ladies Lunch	Jan 6th
2nd Harvest	Jan TBA

“Don’t find fault, find a remedy.” Henry Ford

BIRTHDAYS

BILL WHITE	4TH
MARY FRASER	22ND

ANNIVERSARIES

JAN & MARA JACKSON	31ST
--------------------	------

Message from the Prez

Hasn't this been a great year! I wish I could take credit for it, but the credit goes to all of our club members who 1) suggested activities; 2) led activities; and 3) participated in activities. This is what makes a club GO! I anticipate that 2015 was just the beginning – just watch 2016 blossom.



As expected, we had a wonderful Christmas Brunch at the Meadow Springs Country Club. Many thanks to Bev and Blaine McGillicuddy for arranging the brunch for us again this year. Rumor has it they have already reserved a date for 2016. Wait and see.

If you have any activity ideas for this coming year, please bring them to Bev's attention. I'm sure she already has some great ideas up her sleeve.

I have really enjoyed being your president this past year. Thanks to all of you for your support. It is hard to pick a favorite activity, but certainly one of the most meaningful to me has been our quarterly assistance at Second Harvest. I feel this is just the right community service for our club and I'm glad we will be continuing it this coming year. Thanks to Rick and Janet Budzeck for making all of the arrangements.

If my count is correct, so far I think there are 5 or 6 couples from our club who are making plans to attend the National MAFCA convention in Loveland, Colorado in June 2016. It is not too late, but I know reservations are very tight so don't wait too long!

Don't forget our next club meeting – almost always the second Tuesday of the month. In January that falls on the 14th at 7:00 pm at Reatta Springs Baptist Church.

Marshall Hauck

Ladies Lunch

The monthly ladies luncheon will be held on January 6th, 12:30 p.m., at the Grill on Gage, 8524 West Gage Boulevard, Kennewick.

Christmas Brunch

I always enjoy going to Meadow Springs for Christmas Brunch because it's so festive, the food is good and the gift exchange is usually quite lively. This year was no exception!

President Marshall started the meeting with a moment of silence for Frank Osterwyk who passed away last week.

We voted on the slate of officers as follows:

Jan Jackson, President
Bev McGillicuddy, Vice President
Janet Budzeck, Secretary
Vernita Coffey, Treasurer

After the short meeting we got right into the gift exchange with Mara Jackson drawing the number one chip. She could have taken any of the gifts at the end, but was content to keep her storage containers so no big surprise at the end.

A big thank you to Blaine and Bev McGillicuddy who arranged this event again this year.

Submitted by Jan Jackson



Fashion Feature

Fashions of the Model A Ford Era

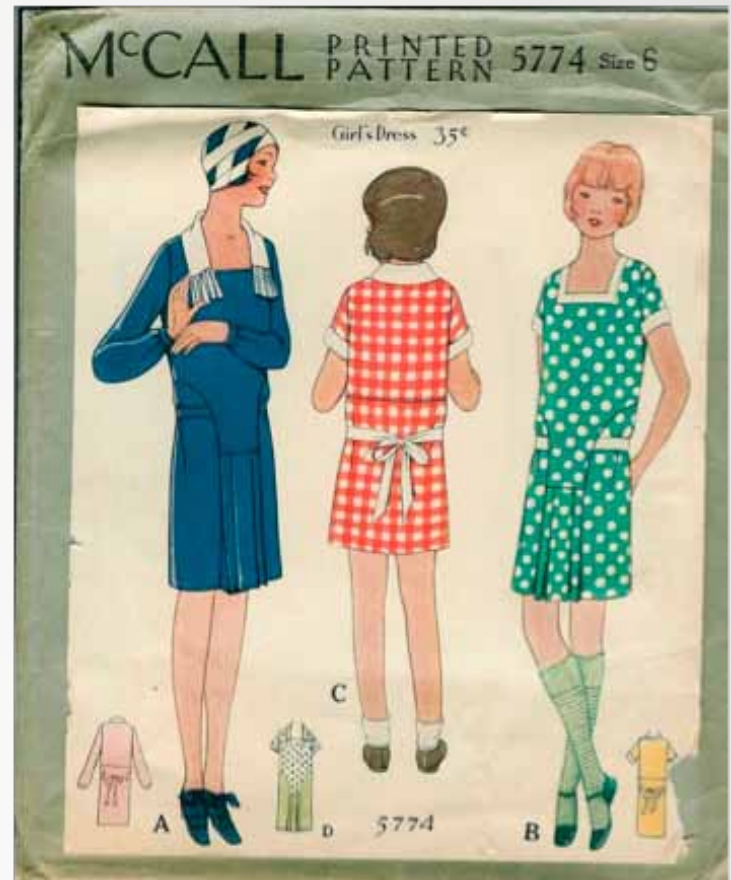
Fashion 101

Sewing patterns were not just for women, although since they were the seamstress a lot of them were targeted to the woman.

This month we are looking at girls dress patterns that could be easily made. Variations made of the three dresses shown on the McCall Printed Pattern #5774 allowed the seamstress some artistic freedom.

The dresses could be made using a solid colored fabric (A), checked fabric (B & C) or with a combination of the two (D). The type of collar and length of sleeves were also left up to the seamstress' desires. The adjustable belt/bow arrangement allowed the waistline to be set to fit the child as they grew.

Submitted by Robin Eldhardt



Frank Osterwyk Memorial

Frank and Laura Osterwyk have been members of the Columbia Basin Model A Club since at least 1989, which is the earliest date our electronic files show. Frank was 87 and passed away at his home in Kennewick on November 25th.

He was born in Montana and after high school enlisted in the Air Force Engineers. After his time in service he worked for GTA Feeds for 34 years.

He was a member of the Columbia Basin Model A Club and Ye Olde Car Club.

Several members of the Columbia Basin Model A Club attended the burial service at Mueller's Desert Lawn Memorial Park in Kennewick.



Restoration Projects *Submitted by Tom Eldhardt*

Ball Bearings – In Bell Housing area

This article was written to be worked in conjunction with last month's article for the replacement of the Transmission bearings. This article is for the replacement of the two bearings located inside of the Bell Housing in the Model A Ford.

These are sealed bearings and do not need to be greased on a regular schedule. The grease zerk fitting accessed under the cover plate on the top of the Bell Housing is used to lubricate the outside of the Transmission's Main Drive (Pilot) Shaft/Gear Bearing Retainer housing (tube), where the Throw Out bearing hub rides.

The Clutch Pilot sealed bearing or a bushing is located at the front end of the Transmission Pilot Shaft where it engages the center of the Flywheel. It keeps the front of the Transmission input shaft aligned with the engine crankshaft. The Throw Out sealed bearing is used to disengage the Transmission from the rotation of the motor to allow for shifting of gears.

This bearing is mounted on the Throw Out Bearing Hub and rides on the outside of the Transmission Main Drive Shaft/Gear Bearing Retainer Housing and is moved by pushing/releasing the Clutch Pedal. The Transmission Main Drive shaft is also known as the Transmission Pilot Shaft.

The major steps and parts needing removed are listed below for the Engine Removal method used to access these two bearings. A second method to remove the Transmission and Rear End will not be discussed at this time. Inspect/replace all defective parts found. The Clutch Plate Disc will need to be aligned during the reassembly activity.

ENGINE REMOVAL METHOD

1. REMOVE the two Floorboards and DISCONNECT/REMOVE the Battery cables and the Battery.
2. REMOVE the Hood and the two Radiator support rods.
3. DISCONNECT and PULL back the wiring to the Headlights and Horn.
4. DRAIN the Radiator, then REMOVE the two Radiator hoses and the Radiator.
5. DISCONNECT/REMOVE wiring to Generator, Starter, Terminal Box and Distributor.
6. DISCONNECT fuel tubing to Carburetor at Fuel Bowl and DISENGAGE Choke Rod assembly.
7. UNBOLT/REMOVE the Water Pump and Fan for additional clearance when engine is being removed.
8. UNBOLT engine at the front cross member, two back engine mounts and from Bell Housing.
9. SUPPORT the Bell Housing/Transmission on a jack and then PULL/LIFT the engine from the car/truck.

FLYWHEEL PILOT SHAFT BEARING REPLACEMENT

1. UNBOLT the Pressure Plate from the Flywheel and then REMOVE the Pressure Plate and Clutch Plate disc.
2. REMOVE/REPLACE the bearing or the bushing located at the center of the Flywheel.

THROW OUT BEARING REPLACEMENT

1. DISCONNECT the bearing shaft housing pull back spring.
2. DISENGAGE the Clutch Release Fork Arm and REMOVE the bearing hub from the shaft.
3. REMOVE/REPLACE the Throw Out Bearing.

In Sympathy

The Columbia Basin Model A Club members extend their heartfelt condolences to Joanne Bryan on the passing of her mother, Edith Ellen Lake Leithauser, on December 2, 2015. "Edith was just two months short of reaching her 97th birthday," stated Joanne.

Edith and her husband, Pete, moved to Sisters, Oregon in 1941 where they raised their family of five children and operated a successful grocery store for 37 years. She was a member of the Daughters of the American Revolution and Oregon Trail Pioneers. Her great grandparents came west in covered wagons on the Oregon Trail. She and Pete were early members of the Sisters Rodeo Association and the Model A club, the High Desert A's of Central Oregon.

MAFCA News

Articles obtained from the MAFCA web site

Members Only Credentials: The username and password needed to access the “members only” section of the website will change in January. As usual, they will be printed at the bottom of Page 1 - the Table of Contents page of your Restorer magazine.

Since we don't all get the magazine at the same time, the change won't take place until January 15, so you may continue to use the current credentials until then.

When the credentials are changed, there will be an announcement on the MAFCA website.

2016 National Convention:

Hosted by the Model A Ford Club of Colorado in Loveland, Colorado, June 19-24, 2016. Registration materials and full descriptions of events and activities will be published in the January-February 2016 issue of the Restorer magazine and also available for download from their web site. Please go to their web site <www.MileHighCountry2016.org> for event and hotel information.

MAFCA Election Results: The election for the MAFCA Board of Directors is over; this year we had five candidates vying for four vacant positions on the board. These members have stepped forward to volunteer their time and experience to help keep MAFCA a world class organization.

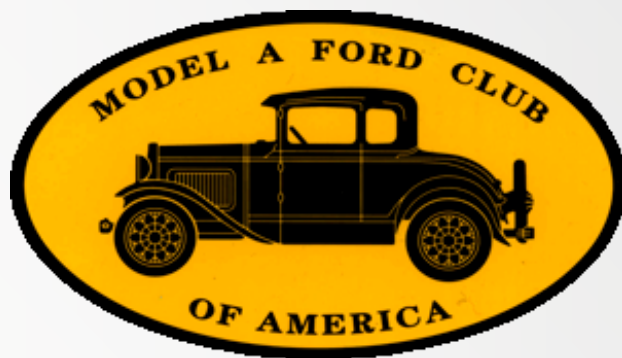
Please join me and the current members of the MAFCA Board in congratulating the following members who have been elected to the 2015-2016 Board of Directors:

Happy Begg - South Carolina
Doug Clayton - California
Bill Henderson - Oregon
Alex Janke - California

The new board members were officially installed at the Awards Banquet in Medford Oregon on December 5, 2015.

Jay McCord, 2014 Membership Director

New Store Item: The newest item added to the MAFCA store is an oval reflectorized MAFCA logo that can be used at the rear or side of your car to help you be seen both day and night. This is a great safety item - check it out on the MAFCA website, MAFCA Store tab.



The purpose of the club shall be to serve as a medium of exchange of ideas, information and parts for admirers of the Model A Ford, and to aid them in their efforts to restore and preserve the car in its original likeness. Membership in the Model A Ford Club of America is a requirement to joining the Columbia Basin Chapter. To join MAFCA, see the web site at <www.mafca.com> and click on the “Join MAFCA” tab. Requirements for membership in the chapter shall not insist upon the actual possession of a Model A Ford, merely an interest in the objectives of the club and a desire to take an active part in club activities shall be the primary requirement for membership. (Excerpt from Columbia Basin Model A Club Bylaws dated February 2015.)

Meeting Minutes

December 12, 2015

Dressed in their holiday finery, the following members attended the Christmas brunch: Jan and Mara Jackson, Marshall and Sharon Hauck, Blaine and Bev McGillicuddy, Tom and Robin Eldhardt, Rick and Janet Budzeck, Scott and Alyce Thompson, Dean and Teri Hinkson, Mary Fraser, Calvin and Vernita Coffey, John and Walteen Corson, Pete and Grace Jackson and Larry Campbell.

The short business portion of the get-together was opened by Marshall and in remembrance of Frank Osterwyk, a longtime member who passed away, he asked for a moment of silence. The minutes from the November meeting were approved as posted and the treasurer's report was provided by Vernita.

Marshall then opened nominations for president and vice president. Jan Jackson was nominated for president and Bev McGillicuddy for vice president. Marshall proposed club members vote for the slate, to which those present approved the proposal and passed the slate of officers.

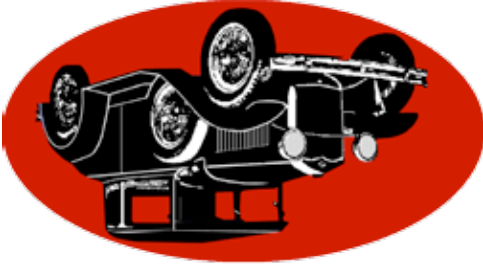
Sunshine: Bev remarked she sent sympathy cards to Laura Osterwyk and Garry and Joanne Bryan for the passing of Joanne's mother.

A treat of chocolate covered macadamia nuts was shared by Marshall and Sharon from their trip to Hawaii.

A motion was made, seconded and passed to adjourn the meeting.

Respectfully submitted by Janet Budzeck, Secretary





Columbia Basin Model A Club
703 S. 48th Ave.
West Richland, WA 99353

The Columbia Crier is a publication of
the Columbia Basin Model A Club. For
questions or submittals to the Columbia
Crier contact Jan Jackson by email at:
j-m.jackson@frontier.com or by phone:
(509) 967-2801.