

Columbia Crier

*A Publication of the Columbia Basin
Model A Club, Tri-Cities, Washington*



Volume 46 Issue 3 March 2016



www.cbmac.org

Inside Features:

- Chocolate Extravaganza
- Sandhill Crane Tour
- Fashion Feature
- Restoration Projects
- MAFCA News

Meeting Location:

Reata Springs Baptist Church
2830 Leopold Lane, Richland, WA
March 10th, 7:00 p.m.



Pete and Grace Jackson are in Kennewick, Washington with their 1930 Model A Ford Town Sedan.



Leadership

President:	Jan Jackson	967-2801
Vice President:	Bev McGillicuddy	627-1254
Secretary:	Janet Budzeck	943-2522
Treasurer:	Vernita Coffey	947-2668
Historian:	Tom Eldhardt	967-3081
Correspondence:	Mara Jackson	967-2801
Sunshine:	Bev McGillicuddy	627-1254
Editor:	Jan Jackson	967-2801
Web Master:	William Sperry	572-2459
Restorer:	Robin Eldhardt	967-3081

Meeting Schedule

January:	Tom & Robin Eldhardt/Mary Fraser
February:	Club Members - Chocolate
March:	Garry & Joanne Bryan
April:	Pete & Grace Jackson
May:	Larry & Sue Campbell
June:	William & Emilia Sperry
July:	Club Members - Potluck
August:	Blaine & Bev McGillicuddy
September:	Marshall & Sharon Hauck
October:	Calvin & Vernita Coffey
November:	Jan & Mara Jackson
December:	Christmas Brunch

Calendar of Events

Sandhill Crane Festival	March 19
Blue Mountain A's 45th	April 9
2nd Harvest	April TBD
Mule Mania Days	May 28
National Model A Convention	June 19-24
Celebration Picnic	July 4

Birthdays

<i>Mara Jackson</i>	<i>2nd</i>
<i>Blaine McGillicuddy</i>	<i>4th</i>
<i>Walteen Corson</i>	<i>22nd</i>
<i>Marshall Hauck</i>	<i>27th</i>

Anniversaries

<i>Bill & Carole White</i>	<i>5th</i>
<i>John & Walteen Corson</i>	<i>25th</i>

Message from the Prez



I was standing out by the shop the other day looking up in the sky. Often times we can hear the sharp trill of the Sandhill cranes as they migrate north. It's still too early, but they'll be flying into Othello in the next few weeks, which means you and I will be rotating tires, tuning up, changing oil, checking transmission fluids and getting ready for our first tour of the year. Speaking of fluids, St. Patrick's Day is a few days before we head to Othello so don't drink too much. Last year we saw sheep and dogs on our first tour of the year. This year it's Sandhill cranes. See details on the following pages.

One of my favorite festivities of the year has come and gone. The Chocolate Extravaganza was a magnificent spread of chocolates including cakes, cookies and candies. Red wine and chocolate is like pairing Humphrey Bogart and Lauren Bacall. Like Fred Astaire and Ginger Rogers. It's a match made in heaven, or possibly Prosser. It's sort of like eating the forbidden fruit. You know you shouldn't eat so much chocolate, so you have seconds.

Bottom line . . . we've got a lot of touring to do this year so get your cars ready to go.

Jan Jackson

Happy Saint Patrick's Day



Ladies Lunch

The monthly ladies luncheon will be held on March 2, 12:30 p.m., at the new Country Mercantile located on Dallas Road in Richland.

Chocolate Extravaganza

The Columbia Basin Model A and Sweet Tooth Club met at Budzeck's for our annual Valentine's Day Chocolate Extravaganza on the 13th.

As you can see from the photos at the right, we had plenty of sweets and even though you can't see the wine, well we had plenty of that too.

Attendees included: Garry and Joanne Bryan, Rick and Janet Budzeck, Tom and Robin Eldhardt, Mary Fraser, Dave Hannah, Marshall and Sharon Hauck, Dean and Teri Hinkson, Jan and Mara Jackson, Pete and Grace Jackson and William, Emilia and Emily Sperry.

Emily organized the table while we held our meeting in the living room. I think she may have sampled some of the chocolate, but I never caught her in the act. After the meeting was adjourned we ambled into the kitchen and loaded our plates with the most delightful chocolate treats imaginable. At the end of the evening there were a few remnants of chocolate and a few swigs of wine left for the host and hostess.

Submitted by Jan Jackson



Top photo shows the table set with sweet treats, middle photo captures the back of Joanne's head, Pete and Grace Jackson and Mary Fraser ready to dive into the treats. In the bottom photo Emily is sampling the chocolate making sure it's fit for consumption.

Sandhill Crane Tour

The first tour of the season is coming right up. We'll all have full gas tanks and empty bladders as we meet at:

- Bank Reale on Road 68 (just north of Applebees).
- Saturday, March 19th
- We will leave the bank at 9:00 am (Dean Central Time)
- Amble into Othello and meet the Yakima Model A Club at Othello High School (approximately 10:30 a.m.)
- Enjoy the festival and observe raptors up close and personal.
- Have lunch at Ironworks Cafe & Market.
- Convoy out to the corn fields where we'll observe the cranes (bring your binoculars and long lenses).
- Observe Tom demonstrating the mating rituals of the Sandhill cranes.
- Drive back to the Tri-Cities via Ringold (bring a good map and your walkie talkies).

We went on our last Sandhill crane tour in 2010, so it's been six years and we're due to have a great time at this festival. It's the first time we're touring with the Yakima Club (although we're taking different routes to get to Othello), but it's always great to share with our neighbors. I can't wait!

"What's that dear? No, the Model A is still up on blocks."

Submitted by Jan Jackson

Fashion Feature

Fashions of the Model A Ford Era

Fashion 101

By 1931 the patterns for the adept seamstress had become quite fashionable with the longer skirt hem with flounces as noted in the McCall Printed Pattern #6632. These dresses could be sewn with either the full length sleeve or the very distinctive shoulder to elbow sleeve ending in the flared sleeve opening. The large flat collar could be trimmed on the outer edge to enhance its look.

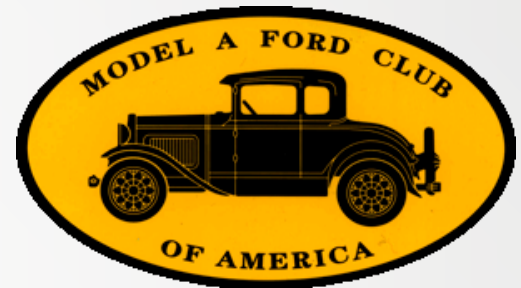
The addition of a self-fabric, side-tied waist belt was very appealing. Matching shoes and a hat finished out the ensemble.

Submitted by Robin Eldhardt



MAFCA News

MAFCA 2016 National Convention: Hosted by the Model A Ford Club of Colorado in Loveland, Colorado, June 19-24, 2016. Registration materials and full descriptions of events and activities will be published in the January-February 2016 issue of *The Restorer* magazine and also available for download from their web site. Please go to their web site www.MileHighCountry2016.org for event and hotel information.



A Note from MAFFI: MAFFI is starting a free membership program for one young person (under 21) from each local Model A club. Membership includes the quarterly MAFFI newsletter sent by email, an iron-on museum patch for jacket or cap and one year FREE admission to the Model A Ford Museum and the Gilmore Car Museum in Michigan. Check <http://www.maffi.org/> and click on "Become a Member" for more information and the application or contact your club's MAFFI liaison (if your club has one). This offer is good through 2016 for a year from the date the application is received and is limited to one free membership per club. If your club does not currently have a MAFFI Liaison, please send an email to mmquesnel@msn.com the name and email address of a willing person and we will gladly add them to our Liaison List. We appreciate your continued support of MAFFI and your willingness to get the word out!
Marsha Quesnel, Trustee, Model A Ford Foundation, Inc.

The purpose of the club shall be to serve as a medium of exchange of ideas, information and parts for admirers of the Model A Ford, and to aid them in their efforts to restore and preserve the car in its original likeness. Membership in the Model A Ford Club of America is a requirement to joining the Columbia Basin Chapter. To join MAFCA, see the web site at www.mafca.com and click on the "Join MAFCA" tab. Requirements for membership in the chapter shall not insist upon the actual possession of a Model A Ford, merely an interest in the objectives of the club and a desire to take an active part in club activities shall be the primary requirement for membership. (Excerpt from Columbia Basin Model A Club Bylaws dated February 2015.)

Restoration Projects

Hyatt Bearings – Rear Wheel Hubs

This article was written for the replacement of the Hyatt Roller bearings used at the Rear Wheel Hubs. These bearings are located inside of the Rear Wheel Hub and ride on the outside of the Rear Axle Housings. Rear Hubs can be removed and worked on separately or together as the mechanic wants to.

The major steps and parts needing removed are listed below. Reassembly of removed parts includes an inspection of all sub-parts and replacement of damaged/defective parts. Replace Hyatt Roller Bearings, seals, Axle Key Stock (bar), and the fiber washers as the assemblies are being put back together. Verify all nuts are tight and torqued. Ensure that a new Cotter Pin has been installed in the castle nut used to hold the Rear Hub in place.

TOOLS NEEDED: Socket for Castle Nut, Hub Puller. (1928 grooved hub, 1929-31 lipped hub), Torque Wrench (150# size), Seal Remover or large flat-blade screwdriver, and other hand tools as needed.

PARTS NEEDED (2 of each): Hyatt Roller Bearings, Bearing hub seals, Rear Axle Key Stock (bars), and Fiber Washers.

NOTE: Torque the Castle nut used to hold the Rear Hub to the Axle to 125 inch-#.

NOTE: The wheel bearings must be lubricated prior to installation. Lubrication is maintained at the REAR wheel bearings by the grease fitting located at the wheel BACKING plate.

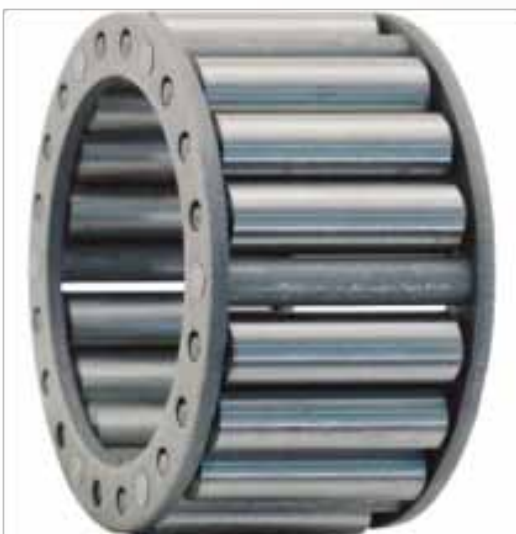
PREPARATION (for each side) –

1. BACK OFF the Brake adjustment pin to relax the Brake Shoes.
2. LOOSEN the five Lug Nuts on the Rear Wheel you are working on.
3. JACK UP the Rear Wheel and PLACE a jack stand under the frame/axle housing, as needed.
4. REMOVE the five Lug nuts and then REMOVE the Rear Wheel.
5. REMOVE the Cotter Pin and then REMOVE the Castle Nut, steel washer and Fiber Washer.
6. REMOVE the Hub using a Hub Puller (1928 grooved hub, 1929-31 lipped hub puller).
7. REMOVE the Axle Key Stock (bar) from Rear Axle.
8. WIPE down the exposed parts to remove excess/accumulated grease.
9. PLACE a clean rag over the exposed axle end.

REAR WHEEL HUB DISASSEMBLY (for each side) –

1. REMOVE the Hyatt Roller Bearing grease seal using a seal remover or flat-blade screwdriver.
2. REMOVE the Hyatt Roller Bearing from the Hub.

Submitted by Tom Eldhardt



Hyatt Roller Bearing



Rear Axle Key Stock (bar)



Rear Hub Bearing Seal



*Rear Wheel Hub
Fiber Washer*

Meeting Minutes

February 13, 2016

The Chocolate Extravaganza was held at the home of Rick and Janet Budzeck and attended by Dave Hannah, Mary Fraser, Jan and Mara Jackson, Pete and Grace Jackson, Garry and Joanne Bryan, Marshall and Sharon Hauck, William, Emilia and Emily Sperry, Dean and Teri Hinkson and Tom and Robin Eldhardt. Jan opened the short business meeting prior to enjoying all the delicious and beautiful treats members brought to share. The minutes from the January meeting were approved as recorded and the treasurer's report was provided by Mara, who informed those present that Vernita had fallen off a ladder and was recuperating. Fortunately, there were no broken bones, but she was quite sore. In the absence of the Sunshine lady, Janet offered to send Vernita a get well card.

Correspondence: Mara stated she received information from Rocky Goodwin who is selling his 1929 Model A Roadster. If you are interested, you may contact Janet for more details.

Tours: Jan commented he had been contacted by Jack Remillard with the Blue Mountain Model A Club inviting our members to join them for lunch to help celebrate their club's 45th anniversary. A head count for those who would like to attend will be taken at our March meeting. Jan suggested that since no clubs in our region volunteered to host a regional meet this year that our club spearhead a joint mini-retreat to Clarkston with the clubs from Walla Walla, Yakima, Spokane and Pendleton. After discussing the suggestion, those in attendance agreed it was a good idea. Jan will contact the clubs mentioned previously to gauge their interest.

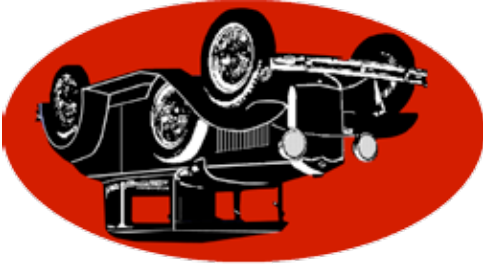
New Business

With regard to having the club Christmas party at a different facility, Janet reported she contacted Country Gentleman and Cousin's and provided details for each facility. Ballots were circulated for members to vote whether to continue to hold the party at Meadow Springs Country Club or choose one of the other restaurants. The Country Gentleman was chosen after tabulating the votes. Janet will call and reserve December 10th for a buffet get-together.

Jan remarked the next meeting will be on March 10th at our regular meeting place and thanked Rick and Janet for having the Chocolate Extravaganza in their home.

With no further business, the meeting was adjourned.

Respectfully submitted by Janet Budzeck, Secretary



Columbia Basin Model A Club
703 S. 48th Ave.
West Richland, WA 99353

The Columbia Crier is a publication of
the Columbia Basin Model A Club. For
questions or submittals to the Columbia
Crier contact Jan Jackson by email at:
j-m.jackson@frontier.com or by phone:
(509) 967-2801.