

# Columbia Crier

A Publication of the  
Columbia Basin Model A Club

Volume 46 Issue 5 May 2015



<[www.cbmac.org](http://www.cbmac.org)>

## Inside Features:

- Tri-Tech Tour
- Wine Center Tour
- 2nd Harvest
- Hanford Reach Tour
- MAFCA News
- Fashion Feature
- How it Works
- Torque Wrench Calibration

## Meeting Location:

Reata Springs Baptist Church  
2830 Leopold Lane, Richland, WA  
May 14th, 7:00 p.m.



Bob and Nancy Kenady are on tour to Boardman, Oregon with their 1931 Model A Pickup.



## Leadership

President:	Marshall Hauck	783-1444
Vice President:	Jan Jackson	967-2801
Secretary:	Janet Budzeck	943-2522
Treasurer:	Vernita Coffey	947-2668
Historian:	Pete Jackson	783-3317
Correspondence:	Mara Jackson	967-2801
Sunshine:	Bev McGillicuddy	627-1254
Editor:	Jan Jackson	967-2801
Web Master:	William Sperry	572-2459
Restorer:	Robin Eldhardt	967-3081

## Meeting Schedule

January:	Tom & Robin Eldhardt/Mary Fraser
February:	Dean & Teri Hinkson
March:	Blaine & Bev McGillicuddy
April:	Rick & Janet Budzeck
May:	<b>Pete &amp; Grace Jackson</b>
June:	Garry & Joanne Bryan
July:	Club Members Potluck
August:	Jan & Mara Jackson
September:	William & Emilia Sperry
October:	Frank & Laura Osterwyk
November:	Calvin & Vernita Coffey
December:	Christmas Brunch

## Calendar of Events

Tri-Tech Tour	April 30
Swap Meet - Kennewick	May 2
Dinner & A Play	May 8
Wine Science Center Tour	May 22
CBMAC 45th Anniversary	June 5
NW Regional Meet	June 23-28
Picnic at Leslie Groves Park	July 4
Lady Drives an A Class	August 8

## BIRTHDAYS

DON MEYERS	6TH
BILL SHAEPI	7TH
SCOTT THOMPSON	9TH
ALYCE THOMPSON	19TH

## ANNIVERSARIES

CALVIN & VERNITA COFFEY	2ND
WILLIAM & EMILIA SPERRY	25TH

## Message from the Prez

Didn't we have a great April? Our visit to the new Hanford Reach Museum was excellent. This is a great addition to our community and will work in well with the efforts of the National Park Service in the Hanford area.



On our spring visit to 2nd Harvest, our group of nine managed to sort potatoes and pack food boxes, all headed for local food distribution centers. This is getting to be a habit – and it is great fun and great for the community.

On May 8, we have an opportunity to see a World famous stage play by Neil Simon– “Barefoot in the Park”. You will not want to miss this. If you haven't signed up yet, the deadline for signing up is April 30. You can sign up at the Tri-Tech tour on Thursday the 30th.

We are very fortunate to have one of our local farmers, Drex Guantt, at our May meeting along with his drone that he uses in his farming activities. The plan is to have him give us a demonstration of its capabilities and take some Model A photos from above. I think Drex really likes this job! Bring your Model A's!

Before you know it, our club will be headed for the NW Regional Meet in Walla Walla. This will be a great location for the meet with many tours and activities. If you haven't signed up, it's not too late, but don't wait. Get those Model A's all tuned up and ready for Walla Walla.

*Marshall Hauck*

## Ladies Lunch

The May Ladies Lunch will be held at The Country Gentleman Restaurant on Wednesday, May 6th, at 12:30 p.m. The restaurant is located at 9221 West Clearwater Avenue in Kennewick.

# Tri-Tech Tour

The Tri-Tech tour will start at 9:30 a.m. on April 30th. We will meet at Tri-Tech which is on Kellogg Avenue across from Charter Cable. They have several old cars the students are restoring and other programs that we'll learn about during our tour. After the tour we will head to Applebee's in Kennewick for lunch. Drive your cars.

# WSU-TC WINE CENTER TOUR

If you would like to see the new Wine Center at WSU-TC, please meet at Rick and Janet Budzeck's home at 9:30 a.m. on Friday, May 22nd. We will then proceed to the Wine Center located on the corner of George Washington Way and 1st Street in North Richland. The tour will begin at 10:00 a.m. and last approximately one hour.

Upon completing the tour, we will travel on to 'That Place', a deli located not far from the Wine Center. Rick has already sampled the beer at this deli and reported they fill the glasses from the bottom – quite a sight to see.

Hope you will join us for a short but, hopefully, interesting tour. This gives us another chance to drive our Model A's.

# 2nd Harvest

What a great way to spend a Wednesday morning – sorting food with club members and others for 2nd Harvest. Those who joined in were Jan and Mara Jackson, Marshall and Sharon Hauck, Tom and Robin Eldhardt, Rick and Janet Budzeck, Mary Fraser and Garry Bryan.

We met at 9:00 a.m. at 2nd Harvest and after viewing a quick video on how to sort potatoes we were hard at it. Upon completing that task, we were shown a video on the proper way to sort donated boxed and canned products from food drives. Following this, we swept and cleaned up the area we had been working in and headed on the back roads to enjoy lunch. We sorted 5,467 pounds of potatoes and 10,343 pounds of food drive produce. This equates to 8,619 meals to the needy.

Country Mercantile is a great place for lunch and we all had our fill. Some of us did some shopping, some socialized a little more and others headed home. All in all, it was another great and fulfilling experience, one we may do again sometime in July.

**Submitted by Rick Budzeck**  
**Photos by Tom Eldhardt**



# Hanford Reach Museum Tour



The Hanford Reach Museum tour was well attended and included Bryans, Budzecks, Eldhardts, Dave Hannah, Haucks, Hinksons, J. Jacksons, P. Jacksons, McGillicuddys and Osterwyks.

We met at Rosies for lunch and then tour director, Tom Eldhardt (along with Robin and Bob), led us to the Hanford Reach Museum. The museum is located a few hundred feet from the Columbia River and is a very modern, well apportioned facility. The front window has a sweeping view of the Columbia for everyone to enjoy.

The exhibits were informative (I didn't know we had rhinoceros in this region) and included quite a bit of documentation pertaining to the Manhattan Project which, of course, culminated in the bombing of Hiroshima and Nagasaki at the end of World War II.

After talking to museum manager, Lisa Toomey, we learned they are planning to team with the National Park Service in connection with B-Reactor, the first commercial size nuclear reactor in the world. They are already educating people on the significance of B-Reactor so it will be an easy transition to meet at the Reach Museum for a preamble and then bus people out to B-Reactor and a tour of the Hanford Site. Our own Pete Jackson worked at Hanford for many years and gave some early history about B-Reactor.

***Submitted by Jan Jackson***



# Fashion Feature

*Fashions of the Model A Ford Era.*

This McCall's printed pattern #5710 is not for the faint of heart. The exposure of the "knees" was a fresh look for the fashionable younger lady in 1928 with these gored skirts. The ladies arms could be uncovered for the sleeveless look, partially covered with a shawl, or fully covered for the full sleeve look. A shawl or full sleeves could be added or removed. The choice was fully hers; as the seamstress she got to select the style she wanted to be seen in.

**Submitted by Robin Eldhardt**



# How It Works – Part 23

## Shock Absorbers – Disassembly

This is the first of a three-part article on Shock Absorbers. Bad seals will allow the fluid to leak out and water to penetrate the interior of the shock. The fluid may have set up and hardened. Some shocks may be frozen in place while the shaft on other shocks flops around and may be so damaged they cannot be fixed.

So how do you Disassemble, Inspect/Clean and then Repair/Refurbish back to their original condition? The following three articles delve into some methods for doing this task. Several parts suppliers have kits available with the replaceable parts and the necessary Shock Absorber fluid. Extremely damaged Shock Absorbers needing machine work will not be covered in these articles.

**BASIC PARTS** – See previous article “How It works – Part 13 – Shocks” for information.

**TOOLS NEEDED** – A 1-9/16” wrench (Inner Cover), an 11/16” wrench (shock mounting bolts), strap wrench, chain wrench, ball peen hammer, punch, scraper, picks, a wire brush, rust remover fluid (Liquid Wrench, a 50/50 mixture of Acetone & ATF fluid, etc.). A 5” x 3” x 1/2” thick plate steel with heavy, square tubing welded to the back side and drilled with two holes to match shock mounting holes is very handy. Applying heat either with a torch or by using a Charcoal BBQ pit can help.

**WARNING:** The pipe wrench teeth may permanently damage the outside of the Outer Cover.

**HELPFUL HINT** - If parts do not come apart easily, then heating them with a torch or heating the whole Shock Absorber in a charcoal BBQ pit for several hours has been proven to loosen up and break old shocks apart, especially the Lock Ring, Outer Cover, Inner Cover and Needle Valve assembly. Another method is soaking the Shock Absorber in a bath of a 50/50 mixture of Acetone and Automatic Transmission Fluid (ATF) for several days.

**DISASSEMBLY** –

1. Mark the Shock Absorber and Arm for its position as being either a LF or RR (AC) or in position RF or LR (CW). Remove the Shock Absorber Arm. Remove Shock Absorbers from car. NOTE: Keep all of the parts for each Shock Absorber together and do not allow mixing them with other shocks parts as each shock is different. The Fill Plug on AC shocks it is to the right of TDC, while on the CW shocks is to the left of TDC.
2. Remove the Fill Plug and dump out/remove any fluid still inside of the Shock Absorber.
3. Soak the threaded areas with rust remover for several days or heat it as noted above.
4. Mount Shock Absorber onto car or in a vise using the special Shock Absorber holder plate.
5. If the exterior of the Shock Absorber is in good condition, then you might be able to disassemble by tapping on the outside of the Outer Cover with a hammer near the threaded area and then using a strap/chain wrench to back off the Lock Ring followed by removing the Outer Cover.
6. Remove Outer Cover with a chain wrench.
7. Remove the Inner Cover which is screwed into the Base.
8. Remove the rotary Wing Shaft from the Base.
9. Remove the Needle Valve assembly from the Wing Shaft. CAUTION: Be very careful as it is delicate. Work as follows: Unscrew the packing hex head about two turns, then loosen the plunger assembly, then repeat. NOTE: The Plunger threads are about 1”, heat this area only.

**Submitted by Tom Eldhardt**

# Torque Wrench Use

A Torque Wrench is calibrated to be used with a socket attached to its end. Sometimes a bolt or nut needs to be torqued, but due to its location the addition of a socket or a socket at the end of an extension bar is not possible. In these cases a “crow’s foot” or an extension lever is needed. Making the Torque Wrench longer/ shorter with the installation of a “Crow’s Foot” or an extension lever will affect the torque setting you need to properly set the Torque Wrench.

The length of the extension bar does not affect the Torque Wrench setting.

Here is the formula:  $M1 = M2 \times L1 / L2$ .

Where: M1 is the torque setting of the Torque Wrench, M2 is the actual torque applied to the bolt or nut, L1 is the normal length of the Torque Wrench, and L2 is the total extended length of the Torque Wrench (length of wrench + length of adapter or lever).

**EXAMPLES:** Torque Wrench setting (M1) needed to torque a head bolt (M2) to 50 FT-LBS?

ANSWER #1: If M2 = 50 FT-LBS (Desired torque), and L1 = L2, then M1 = 50 FT-LBS.

ANSWER #2: If M2 = 50 FT-LBS (Desired torque), and L1 = 12” (torque wrench length), and L2 = 18” (Total length of wrench with 6 inch extension lever). Math:  $50 \times 12 / 18 = 33.3$ . Therefore: M1 = 33.3 FT-LBS. In other words if you want to torque a fastener to 50 FT-LBS using an 12 inch torque wrench with an in-line 6 inch extension lever you will need to set the Torque Wrench to 33.3 FT-LBS.

**NOTE:** If the “crow’s foot” or the extension lever is at a right angle (90°) to the Torque Wrench and not at its end increasing the Torque Wrench length, it will not effectively change the torque value. The Torque Wrench would be set to 50 FT-LBS.

Torque Wrench = 12”, Extension bar = any length, Crow’s Foot or Extension lever = 6” long

**Submitted by Tom Eldhardt**



Side View: If  $L2 = 12" + 6" = 18"$  Total Length. Then  $M1 = 2/3 M2$



Top View: Lever is at ~ 90°,  $M1 = M2$ .

*The purpose of the club shall be to serve as a medium of exchange of ideas, information and parts for admirers of the Model A Ford, and to aid them in their efforts to restore and preserve the car in its original likeness. Membership in the Model A Ford Club of America is a requirement to joining the Columbia Basin Chapter. To join MAFCA, see the web site at [www.mafca.com](http://www.mafca.com) and click on the “Join MAFCA” tab. Requirements for membership in the chapter shall not insist upon the actual possession of a Model A Ford, merely an interest in the objectives of the club and a desire to take an active part in club activities shall be the primary requirement for membership. (Excerpt from Columbia Basin Model A Club Bylaws dated February 2015.)*

# Meeting Minutes

**April 9, 2015**

The Model "A" Club's monthly meeting was opened by president, Marshall Hauck and attended by Garry and Joanne Bryan, Tom and Robin Eldhardt, Frank and Laura Osterwyk, Sharon Hauck, Mary Fraser, Rick and Janet Budzeck, Pete and Grace Jackson, Blaine and Bev McGillicuddy, Dean and Teri Hinkson, Dave Hannah and Calvin and Vernita Coffey. The minutes were approved with a motion and the treasurer's report was provided by Vernita.

**Correspondence:** Per an e-mail from Mara, Janet stated there was no correspondence and that Ted Parnell from the Yakima club had passed away.

**Sunshine:** Dave thanked everyone for their prayers and cards.

**Tours:** Tom informed those present of the following tours for the month of April:

- 4/15 – meet at Rosie's Diner at 11:00 a.m. for lunch and then proceed to tour the new **Reach Museum**.
- 4/22 – meet at **2nd Harvest** at 9:00 a.m. to sort food until 12:00 p.m. and then enjoy lunch afterwards at Country Mercantile.
- 4/30 – meet at 9:30 a.m. at **Tri-Tech** for a tour followed by lunch at Applebee's in Kennewick.

Tom also stated that on June 6th members should plan on meeting at the carousel in Southridge for a club photo, which Jan will send to *The Restorer* in recognition of our club's birthday. Sharon commented that on May 9th those interested were welcome to join them for dinner and a play. She provided an information sheet to be completed and returned to her if you want to participate. Dinner will be at Sterling's in Richland at 5:45 p.m. and the play, Barefoot in the Park, begins at 8:00 p.m. (**Update:** Due to a Community Concert performance, the dinner and play event has been moved to Friday, May 8th. Also, the club photo scheduled for June 6th has been moved to June 5th.)

**Old Business:** Joanne informed those present she has vest material stored at her home if anyone needs some.

**New Business:** Tom reported Robin and Mara will be partnering to sponsor a Lady's Drive a Model "A" Day.

**Announcements:** Marshall recognized those celebrating birthdays and anniversaries and thanked Rick and Janet for providing the refreshments.

**Projects:** Tom stated he is in the process of painting Robin's Model A and that his car, Bob, is now running.

**Respectfully submitted by Janet Budzeck, Secretary**

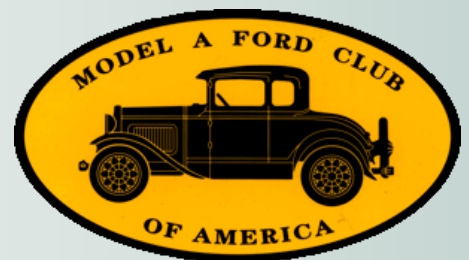
## MAFCA News

**Tech Drawings:** Two new technical drawings have been added to the MEMBERS ONLY section on the MAFCA web site. These are the Safety and Maintenance Checklists found in the appendix of Les Andrews' "Model A Ford Mechanics Handbook." Now that spring has arrived, use these checklists to make sure your Model A is ready for touring.

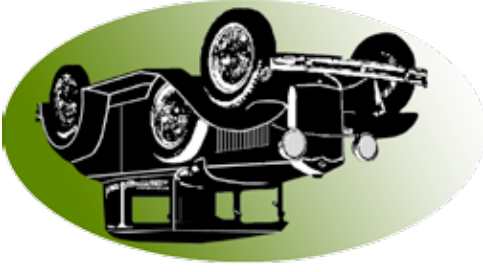
**Youth Scholarship Award:** MAFCA is pleased to offer its financial support and encourages both members and chapters to also support this great program for our Model A youth, either through fund raisers, memorials or individual donations.

The Model A Ford Youth Scholarship Fund, Inc. was established as a 501 (c)(3) tax exempt organization to assist children and/or grandchildren of any MAFCA/MARC member in pursuing their undergraduate education, whether it be a state university, college or technical school. The scholarships awarded are for up to four years. The funds come from financial contributions and various fundraising efforts from MAFCA/MARC members and chapters.

Applications for this year's award are due by MAY 15. For more information, and to download the application package, see the Youth Scholarship Page on the MAFCA web site.







Columbia Basin Model A Club  
703 S. 48th Ave.  
West Richland, WA 99353

The Columbia Crier is a publication of  
the Columbia Basin Model A Club. For  
questions or submittals to the Columbia  
Crier contact Jan Jackson by email at:  
j-m.jackson@frontier.com or by phone:  
(509) 967-2801.