

# Columbia Crier

A Publication of the Columbia Basin  
Model A Club  
Tri-Cities, Washington



Volume 48 Issue 5 May 2018

[www.cbmac.org](http://www.cbmac.org)

## Inside Features:

- Cherry Blossom Tour
- Palouse Falls Tour
- Food Drive
- Restoration Projects
- Fashion Feature
- True or False?
- MAFCA News

## Meeting Location:

Reata Springs Baptist Church  
2830 Leopold Lane, Richland, WA  
May 10th, 7:00 p.m.



Marshall and Sharon Hauck are in Prosser, Washington for the States Day Parade with their 1929 Model A Ford Town Sedan.



## Leadership

President:	Larry Campbell	783-5864
Vice President:	Marshall Hauck	783-1444
Secretary:	Janet Budzeck	943-2522
Treasurer:	Blaine McGillicuddy	627-1254
Historian:	Tom Eldhardt	967-3081
Correspondence:	Mara Jackson	967-2801
Sunshine:	Bev McGillicuddy	627-1254
Editor:	Jan Jackson	967-2801
Web Master:	William Sperry	572-2459
Restorer:	Robin Eldhardt	967-3081

## Meeting Schedule

January:	Canceled
February:	Larry & Sue Campbell
March:	Tom & Robin Eldhardt/ Mary Fraser
April:	Bruce & Shelley Clark
May:	<b>Rick &amp; Janet Budzeck</b>
June:	John & Thora Trumbo/ Pete & Grace Jackson
July:	Club Members - Potluck
August:	Open
September:	Calvin & Vernita Coffey
October:	Jan & Mara Jackson
November:	Blaine & Bev McGillicuddy
December:	Christmas Brunch

## Ladies Lunch

The ladies lunch will be held on May 2, 12:30 PM, at the Country Mercantile located on Dallas Road. If you're planning to attend, please call Vernita at 947-2668 so she can add you to the RSVP list.

### Birthdays

<i>Don Meyers</i>	<b>6th</b>
<i>Scott Thompson</i>	<b>9th</b>
<i>Alyce Thompson</i>	<b>19th</b>

### Anniversaries

<i>Calvin &amp; Vernita Coffey</i>	<b>2nd</b>
<i>William &amp; Emilia Sperry</i>	<b>25th</b>

## Larry's Lessons



First, thanks to Jan and Mara for organizing and leading the cherry blossom tour. What a great way to spend a beautiful spring day enjoying our hobby.

An occasional table topic is the question of what a particular Model A is worth. Borrowing heavily from an article by Grant MacLaren, the short answer is whatever a buyer is willing to pay. The experienced Model A contingent have an idea based on years of seeing a wide variety of cars bought and sold. The research oriented look at price guides such as the annual January/February issue of the Old Car Report magazine or look at ads in various car magazines, club web sites, Craigslist, and other car web sites.

Condition can make a large difference in the price. The old car price guide provides a rating scale from 1 to 6. A number one car is restored to the current maximum professional standard or a like new original that is stored in a climate controlled facility, transported in a closed trailer and never driven. There are very few number one cars. Most people have a number 3 car which is classified as very good condition. As an example of the price difference, the 2017 Old Cars Report price guide shows that for a 1930 4d Phaeton a number one car is worth \$45,000 whereas a number three is worth \$20,250. Selling a number one car can be difficult since most people in the hobby would choose a nice number 3 car for less than half the price.

Modifications can either add or detract from the value. It depends on what the buyer is looking for. It is not unusual to have more into a car than what it is worth.

So the bottom line is that buyers want to pay as little as possible and sellers want to get as much as they can. Good luck to anyone that is looking or selling.

*Larry Campbell*

## Calendar of Events

Palouse Falls Tour	May 18
Club Birthday	June 7
MAFCA National Convention	June 24-29
Celebration Picnic	July 4
Hotter than Hades Tour	August 10-11
States Day Parade	September 3
International Model A Day	September 22
Goldendale Overnighter	October
Veterans Day Parade	November 10
Christmas Brunch	December 8

# Cherry Blossom Tour

Five Model A's along with drivers and passengers arrived in Benton City on April 20th. Model A members joining us included: Rick and Janet Budzeck, Larry and Sue Campbell, Bruce Clark, Tom and Robin Eldhardt, Mary Fraser, Dave Hannah, Jan and Mara Jackson, Blaine and Bev McGillicuddy and Hal Vandevord.

I was hoping to get lost on this tour, but my plans were foiled and we pretty much cruised into Prosser without even getting off of pavement. We did see a bunch of blooming cherry trees (they could have been apple or pear for all I know) along the way. We zigged and zagged our way west and then worked our way south until Prosser came into view. Then it was just a matter of finding a cross street that crossed the Yakima River in Prosser.

We had lunch at Jeremy's 1896 Pub House, which was a great place to eat. After lunch Mara passed out a passle of Chukar Cherry chocolates for dessert bringing smiles to our faces and returning the Chukar Cherries to their home in Prosser.

The trip back to Benton City was less circuitous, bombing back along the Old Inland Empire Highway. Hal drove his 1928 pickup down from Pullman so he'd already had a major tour before he got to Benton City. His father-in-law, Al Holman, was a founding member of our club so the 1928 pickup has been in and out of our club for several decades.

When I backed into the garage I could hear a rattling noise. I thought maybe one of the hood latches had come loose, then I thought my water pump bearing was shot. After removing the water pump I discovered that the noise was a cracked fan blade. How cracked? It was loose on three sides, another hour or so and it would have careened through the radiator. Now I've got about twenty days to get ready for the Palouse Falls tour.

***Submitted by Jan Jackson***



# Palouse Falls Tour

Palouse Falls should be really flowing on May 18th. Once we get done viewing our state's official waterfall, we'll amble into Starbuck and check out the new restaurant for lunch. We'll probably return home via Waitsburg because we may need gas before returning through Prescott and Pasco.

Who: Columbia Basin Model A Club

What: Tour to Palouse Falls with stops in Starbuck and Waitsburg

Where: Meet at the Red Lion in Pasco near HAPO credit union

When: May 18th, 8:30 am, return before dark

Why: Comaraderie, sight seeing, testing mechanical skills

If you're planning to attend, let Jan and Mara know by Wednesday, May 16th.

## Parts for Sale

1. Big cast iron wood burning stove
2. Vintage license plates  
1929 WA Car  
1940 WA Truck  
1962 Idaho Car, pair
3. Ford Model T foot warmer
4. Ford Model T coil
5. Ford Model A tire pressure gauge in pouch
6. Various Ford Model A parts
7. Several Motor Repair Manuals
8. Rear window for 1972 Volkswagen convertible top
9. Petrified 1940(?) tire/tube on wheel

If interested, please call Don Meyers at (509) 586-4244. Don says he is home most of the time.

## Food Drive



It is becoming more difficult to recruit members for the quarterly food sort at Second Harvest. So, it was decided to have a food drive instead.

The idea is to bring canned foods to a club meeting where they will be gathered, weighed and then distributed to a food bank or Second Harvest.

We will do this every meeting and at the end of the year we'll have a tally on how many pounds of food we delivered to the less fortunate.



Happy,  
Mother's  
Day

# Fashion Feature

*Fashions of the Model A Ford Era*

## Fashion 101

Where are those knees? In this McCall Printed Pattern #5601 the dress maker could sew a fashionable dress with multiple looks and many fabrics. The needs of the 1928 era to have the knees properly covered could be easily made. Whether you wanted the long or short sleeves and if you wanted a belt or not these patterns let the seamstress decide.

**Submitted by Robin Eldhardt**

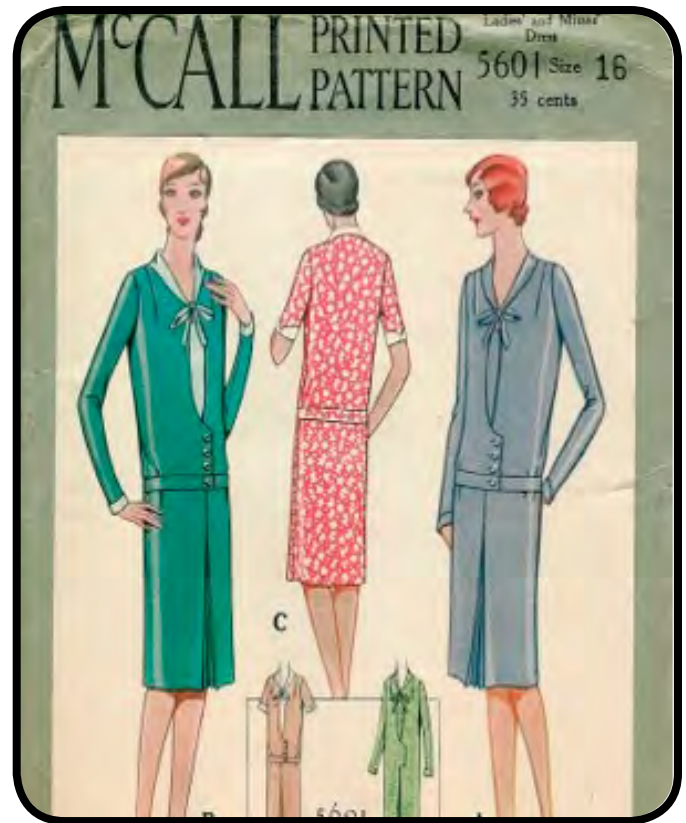
## True or False?

- The Tie Rod connects the front wheels via the left and right hand side Steering Arms.
- The Dash light comes ON whenever the Steering Wheel mounted Light Switch is placed into the High or Low Headlight position.
- The three-speed transmission only has synchronized gears in 2nd and 3rd gear.
- There is a small gap between the bottom of the body and the top of the Running Board Splash Aprons/Shield.
- A complete spare tire (Rim, Tire & tube) was an additional cost when buying a new vehicle.
- The Universal Joint is bolted to the front end of the Drive Shaft.
- Some of the bolts are safety wired to each other so that if a bolts becomes loose and falls out it won't get lost on the road and the owner can put it back in place.

### ANSWERS

TRUE – There is a steering arm attached to each of the spindles. The Tie Rod is attached to one of the balls on the left side steering arm and to the ball on the right side steering arm. It is used to “TIE” the operation of the front wheels together as one unit.

FALSE – The Dash Light is manually turned ON and OFF by the driver of the vehicle. On the Oval speedometer dash the center mounted Dash Light cap is pushed in and turned slightly. On the round speedometer dash the Dash Light is located behind



the dash rail and is controlled by a switch on the Dash Light assembly.

FALSE – The Model A Ford did not any synchronized gears in the transmission.

TRUE – The body of all vehicles were mounted onto wooden body blocks, which sat on top of the Running Board Splash Aprons/Shield.

TRUE – Vehicles were supplied with a Rim only as they came off of the assembly line. Vehicle buyers could obtain a tire and tube from the local dealer or elsewhere.

FALSE – The Universal Joint is bolted to the rear end of the transmission main shaft. Its rear internal splined area of the Universal Joint fits over the splines on the drive shaft. These splined areas allow the Rear end to flex due to road conditions.

FALSE - Some bolts have been modified to have Safety Wire attached to them to prevent the bolts from coming loose during the normal operation of the vehicle. These special bolts are used in critical locations of the vehicle, such as: the Flywheel Housing to the Engine Block bolts, Flywheel to Crank Shaft bolts, Transmission Rear Bearing Retainer to Transmission case bolts, Rear End Ring Gear to Carrier bolts and the Torque Tube to Rear End Housing bolts.

**Submitted by Tom Eldhardt**

# Restoration Projects

## Model A Ford Repair & Restoration – Trouble Shooting Engine Breakdowns

There are two typical reasons why a Model A Ford engine that was operating well at the start of a tour stops or quits running. It is usually a Spark or Fuel problem.

### **SPARK**

- Tooting the Horn will indicate that the Fuse is okay.
- Place the Ignition Switch in the “OFF” position.
- Place the car in Neutral and set the Emergency Brake.
- Open the Hood on the Passenger’s side.
- Connect one wire from the Test Light to Ground.
- Temporarily clip the other wire from the Test Light to the Coil stud on Passenger’s side. The Test Light should come “ON”.
- Clip the other Test Light wire to the RED wire connection at the Coil stud. The Test Light should come “ON”.
- Remove the Distributor Cover w/attached Coil High Tension wire, and check to see if the Distributor Points are “Open” or “Closed”.
- Place the Ignition Switch into the “ON” position.  
If the Distributor Points are “Closed” the Test Light will go “OFF”.  
If the Distributor Points are “Open” the Test Light will stay “ON”.
- Place the Ignition Switch into the “OFF” position.
- Place the car into 3rd gear and release the Emergency Brake.
- Rock the car to get the Distributor Cam to fully “Open” the Distributor Points.
- Verify/set the Distributor Points gap to 0.018”-0.022”. (Ideal gap is 0.018”).
- If Distributor Points are dirty or wet, then clean them.

### **FUEL**

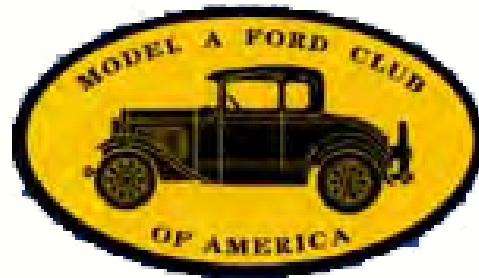
- Remove Gas Cap and listen for an air suction hiss caused by a clogged Gas Cap vent hole.
- Turn the engine over a few times while pulling on the Chock Rod.
- Check that Carburetor throat is WET with Fuel, indicating that Fuel is getting to the Carburetor.
- If Carburetor throat is DRY then either the Fuel line is clogged or the Carburetor Float is stuck closed.
- If the Carburetor Float is stuck Closed then tapping the Carburetor body on the side with a wrench should release it.
- If the problem is not getting Fuel to the Carburetor then the Gas Tank or the Sediment Bowl filter or the filter at the Carburetor could be clogged up with debris blocking the Fuel supply. Turn “OFF” the Gas Tank drain valve (Shut-Off valve) and remove and clean the system.

### **NOTES:**

- The ideal dwell for all 4-cylinder engines is at 31°, which converts to a point gap of 0.018”.
- New points should be set at 0.022” gap. After the fiber block wears down and glazes over (hardens) then setting the points to 0.018” is okay and should last several years.
- Coil output voltage is about 24,000 volts.
- The time from spark at the Spark Plug to Fuel ignition is about 3 milliseconds (0.003 seconds).
- When starting an engine, the spark needs to happen after the piston has gone past TDC (Top Dead Center) to prevent the piston being pushed the wrong direction damaging the Babbitt.

**Submitted by Tom Eldhardt**

# MAFCA News



**MAFCA's Blue Oval Program:** This new program rewards each MAFCA member for referring a new member. It features a window sticker that you can proudly display on your Model A Ford, a letter of appreciation for your efforts and one entry for each new member you refer into a special drawing for a \$50 gift certificate from MAFCA's store. Drawings are held just prior to the printing of each *Restorer* magazine.

**Are You Getting Everything?** Did you know your membership in MAFCA includes a free copy of the digital *Restorer* magazine? If you are not receiving it, send an email to [info@mafca.com](mailto:info@mafca.com). In the subject line, write "Sign Up for the Digital Restorer."



Check out the latest information on the 2018 MAFCA National Convention. Click on the logo to obtain up to date information about the convention.



## MAFFI Minute:

What's New at the Museum?

There has been some recent redecorating in the Parts Department of the Museum. There had been a donation of 4 framed color drawings and John Marshall was inspired by those to recreate "New" signs. Once those were done, they were hung alongside the donated drawings, reframed and looking like the original pictures.

We are always striving to keep our museum fresh and new for those returning to the museum for another look and especially for those who are coming for the first time. If you have been thinking about a trip to the museum, why not make plans to join us for Model A Day, September 15, 2018. If you can't make it for Model A Day, the museum is open 7 days a week. Anytime you happen to be in the area, come by for a visit.

Thank you for your continued support of the Model A Ford Foundation by both item donation and monetary support.

Marsha Quesnell, MAFFI Trustee



*The purpose of the club shall be to serve as a medium of exchange of ideas, information and parts for admirers of the Model A Ford, and to aid them in their efforts to restore and preserve the car in its original likeness. Membership in the Model A Ford Club of America is a requirement to joining the Columbia Basin Chapter. To join MAFCA, see the web site at [www.mafca.com](http://www.mafca.com) and click on the "Join MAFCA" tab. Requirements for membership in the chapter shall not insist upon the actual possession of a Model A Ford, merely an interest in the objectives of the club and a desire to take an active part in club activities shall be the primary requirement for membership. (Excerpt from Columbia Basin Model A Club Bylaws dated February 2015.)*

# Meeting Minutes

*April 12, 2018*

The monthly meeting was brought to order by the president Larry Campbell and attended by Jan and Mara Jackson, Dave Hannah, Blaine and Bev McGillicuddy, Bruce Clark, Tom and Robin Eldhardt, Marshall and Sharon Hauck, Sue Campbell, Mike and Linda Porter, Mary Fraser and Rick and Janet Budzeck. The minutes from the March meeting were approved with a motion and the treasurer's report was provided by Blaine.

## ***Correspondence***

Mara reported she received a flyer from Lee Thorsell providing information on his 1931 Victoria that he has for sale. Janet commented that the Secretary of State had approved our club's annual report.

## ***Sunshine***

Bev stated she did not send out any cards and reported John Trumbo is improving nicely after his open heart surgery.

## ***Tours***

Marshall reminded those present of the Cherry Blossom tour set for Friday, April 20th. (See the April newsletter for details on when and where to meet.) He also highlighted the Palouse Falls tour set for Friday, May 18th, with plans to eat lunch at a new restaurant in Starbuck. For those club members planning on attending the national convention in Sparks, Nevada, Marshall discussed some options for an overnight stay while traveling to the meet. Currently, those registered to attend are Marshall and Sharon, Jan and Mara, Blaine and Bev, Tom and Robin and Rick and Janet.

## ***Old Business***

Larry reminded members to bring canned goods to our monthly meetings. Rick and Janet will take what is brought to the food bank at their church, Richland Lutheran. Jan stated the white and teal shirts have been ordered.

## ***New Business***

Larry stated Ye Olde Car Club's annual swap meet is set for Saturday, May 5th.

## ***Announcements***

Don and Marti Meyers are having an estate sale this coming Friday and Saturday, April 13th and 14th beginning at 8:00 a.m. Jan commented on his attendance at the Northwest Regional Group meeting where they discussed future sponsors for the regional meets. For the odd numbered years, clubs from Seattle and Portland have committed to host meets in 2019 and 2025. The Boise and Calgary clubs have been contacted to see if they'd host regional meets in 2021 and 2023. No smaller clubs have as yet volunteered to host regional meets.

Larry congratulated those members who had birthdays and/or anniversaries this month and thanked Bruce for providing this evening's refreshments. With no further business, a motion was made, seconded and passed to adjourn the meeting.

***Respectfully submitted by Janet Budzeck, Secretary***





## Free USA Membership Application 2018

*Please Print*

**Name:** \_\_\_\_\_

**Spouse:** \_\_\_\_\_

**Address:** \_\_\_\_\_

**Country:** \_\_\_\_\_

**City, State/Province:** \_\_\_\_\_

**Telephone:** \_\_\_\_\_

**Zip Code:** \_\_\_\_\_

**Email:** \_\_\_\_\_

I give MAFA permission to publish my phone number in future membership rosters.

Circle One  
Yes      No

**Optional Initiation Package \$11.00  
Plus Shipping Charge**

One Back Issue of *The Restorer*

One Lapel Pin

One MAFA Window Decal

One Name Badge

**Additional Items Of Interest  
Plus Shipping Charge**

Denim Baseball Cap...\$15.00

Spill Proof Travel Mug...\$10.00

MAFA Afghan...\$39.00

Model A Bank...\$25.00

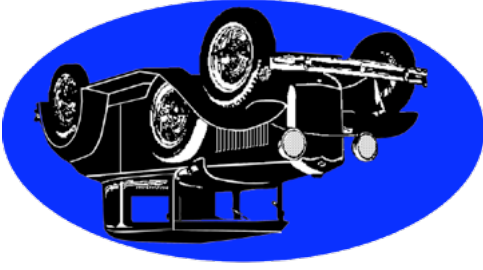
Item Description	Quantity	Unit Price	Total
2018 USA MAFA Membership Online Edition	1	\$0.00	0.00
Mechanics Handbook Vol. 1 by Les Andrews		38.00	
Coupe Book		24.95	
Coupe Book + Polo Shirt Circle Size S M L XL		45.00	
Shipping Charges...Up to \$10.00=\$5.75 / \$10.01-\$23=\$9.85 / \$23.01-\$50.00=\$11.95 / 50.01-\$100=\$14.25			
<b>Total Purchase</b>			

**Visit [mafca.com](http://mafca.com) to view our entire store**

**Requirements For Free Membership**

- Only families never having held membership in MAFA may apply for free membership
- Free membership includes *The Restorer* magazine from the time the application is received by the office. Past issues may be purchased at the regular price depending on availability.

**Return Free Membership Form To MAFA 250 So. Cypress, La Habra, CA 90631-5515  
Questions: 562-697-2712**



Columbia Basin Model A Club  
703 S. 48th Ave.  
West Richland, WA 99353

The Columbia Crier is a publication of  
the Columbia Basin Model A Club. For  
questions or submittals to the Columbia  
Crier contact Jan Jackson by email at:  
j-m.jackson@frontier.com or by phone:  
(509) 967-2801.