

Columbia Crier

A Publication of the Columbia Basin
Model A Club, Tri-Cities, Washington



Volume 47 Issue 9 September 2015

<www.cbmac.org>



Inside Features:

- Lady Drives An A
- Restoration Projects
- Tour to Enterprise
- MAFCA News
- Fashion Feature
- States Day Parade

Meeting Location:

Reata Springs Baptist Church
2830 Leopold Lane, Richland, WA
September 10th, 7:00 p.m.



Jan and Mara Jackson are on tour to Fred's garage on the Kitsap Peninsula during the National Model A Convention in Puyallup last summer. Mount Rainier is peaking out in the background.



Leadership

President:	Marshall Hauck	783-1444
Vice President:	Jan Jackson	967-2801
Secretary:	Janet Budzeck	943-2522
Treasurer:	Vernita Coffey	947-2668
Historian:	Tom Eldhardt	967-3081
Correspondence:	Mara Jackson	967-2801
Sunshine:	Bev McGillicuddy	627-1254
Editor:	Jan Jackson	967-2801
Web Master:	William Sperry	572-2459
Restorer:	Robin Eldhardt	967-3081

Meeting Schedule

January:	Tom & Robin Eldhardt/Mary Fraser
February:	Dean & Teri Hinkson
March:	Blaine & Bev McGillicuddy
April:	Rick & Janet Budzeck
May:	Pete & Grace Jackson
June:	Garry & Joanne Bryan
July:	Club Members Potluck
August:	Jan & Mara Jackson
September:	William & Emilia Sperry
October:	Frank & Laura Osterwyk
November:	Calvin & Vernita Coffey
December:	Christmas Brunch

Calendar of Events

States Day Parade – Prosser	Sept 7
Tour to Enterprise, OR	Sept 17-19
2nd Harvest	Oct TBA
Hat Rock Park Tour	Oct 17
Halloween Party	Oct 30
Veterans Day Parade	Nov 7
MAFCA Annual Awards	Dec 3-5
Christmas Brunch	Dec 12

“Even a mistake may turn out to be the one thing necessary to a worthwhile achievement.”

Henry Ford

BIRTHDAYS

MARTI MEYERS

17TH

Message from the VP

The ‘Lady Drives an A’ class was well attended and hopefully the ladies who earned a patch will continue driving their Model A’s. Remember, ‘Practice Makes Perfect.’



The Benton Franklin Fair Parade is coming up on the 22nd; however, we’ll be on a slow boat to Alaska so we’ll miss this one. If you’re planning on being in this parade and no one shows up, Dave will let you join the Ye Olde Car Club group.

The States Day Parade in Prosser is also coming right up on September 7th and we’ve contacted the Yakima club so we can have a group luncheon after the parade.

I’m really excited about the tour to Enterprise/Joseph on September 17-19th. Mara and I have been thinking about this cruise for several years. Since I’m somewhat famous for my short-cuts I have a surprise way to get from Athena back to the Tri-Cities. It’s a surprise because I haven’t actually looked at a map yet, but never fear, I’ll have it figured out before we leave Enterprise!

I would encourage you to plan an overnight cruise (or two or three day cruise) for next year. I’m hoping that the VP Cruise will be an annual event for our club, so we’re going to need ideas for the coming years. We’ll have eight couples and six Model A’s on the Enterprise/Joseph cruise so it will be a lot of fun and hopefully build even more camaraderie among the group.

Jan Jackson

Ladies Lunch

The monthly ladies luncheon will be held on September 2nd, 12:30 p.m., at Rosy’s Diner near the Richland Hampton Inn.

Lady Drives an A

The 'Lady Drives an A' class was held on August 8th at Enterprise Middle School in West Richland.

The ladies pictured to the right went through the Model A fundamentals like checking the oil, water and what the advance lever does to propel your car forward.

After the class part of the program, the ladies drove their cars around the parking lot and backed into the stalls they had departed from minutes earlier.

Then, we took a tour along Keene Road towards the old race track, hung a right and ambled back into West Richland, took another right and powered up Bombing Range Road to Italiano's Restaurant where the students, their spouses, Garry and Joanne Bryan, Alyce's son Harrison Thompson, Mara and I enjoyed lunch.

I have been told everyone had fun at this class, the ladies know how to drive these great little cars a little better and the lunch was, as always, delicious.

Submitted by Jan Jackson



Ladies taking the class and proudly displaying their Lady Drives an A patch include Alyce Thompson, Sue Campbell, Sharon Hauck, Robin Eldhardt, Grace Jackson, Janet Budzeck and Bev McGillicuddy.



Photos above show Jan Jackson pointing out the points and spark plugs to Janet Budzeck and Marshall Hauck going over the throttle lever with Bev McGillicuddy.

Photo below features the Club's Model A's outside of Italiano's Restaurant in West Richland. Photo courtesy of Tom Eldhardt.



Enterprise Tour

September 17th – 19th

Total Miles from Tri-Cities: 192
Estimated Time on the road: 4 hours

Schedule:

September 17th (Thursday)

8:00 a.m.: Leave Pasco Red Lion at 8:00 a.m. The route will take us on Highway 12 to Touchet and then a shortcut through Umapine and into Milton Freewater. We will stop for gas at the Conoco station at 419 S. Main St & SE 5th Ave. before climbing up to the summit at Spout Springs. Next ethanol free gas is Elgin: O&M Gas 395 Albany St. (145 miles from Tri-Cities) and Goebel's in Wallowa 504 W. 1st (172 miles from Tri-Cities).

Noon: Arrive in Enterprise, eat lunch at: Heavenly's • 500 W. North Street • (541) 426- 4195. Meet Linda and Denny Kehl for a garage tour. Check into Eagle's View Inn & Suites in Enterprise at 5:00 p.m.
Dinner at Terminal Gravity Brew Pub: 803 School St., Enterprise (541) 426-0158. Back up if weather is inclement: El Bajio Mexican Restaurant • 100 W. North Street.

September 18th (Friday)

9:00 a.m. Breakfast at Cheyenne Café • 209 N. Main Street • Joseph (541) 426-2233.

10:30: Tour the Valley Bronze Foundry at 307 W. Alder Street • Joseph, Oregon. This tour will last approximately 1-1/2 hours. Fee = \$15/person (541) 432-7551.

Noon: Lunch at R&R Drive-In • 301 N. Lake St. • Joseph: (541) 432-9000

Enterprise/Joseph/Wallowa Lake: After lunch will be a free day to explore the antique shops in Joseph (Simply Sandy's) or Enterprise (Time Was & Antiques & Newer), or peruse the art galleries in Joseph (7 bronze, 6 painters and several artists working in glass, clay, wood textile and photography or explore Wallowa Lake for the afternoon. Things to do and see at the lake: Tramway: 3700' vertical ascent to the summit of Mt. Howard. Hiking trails and restaurant are at the top along with spectacular views of the 7 Devils, Wallowa Lake and surrounding mountains. There are a few galleries at the lake, a marina, tourist traps and games. For more information go to the Wallowa Lake Chamber web site: <http://wallowalake.net/>

5:00 pm: Dinner at Ember's Brewhouse: 204 N. Main St. • Joseph: (541) 432-2739
After dinner we'll drive back to Enterprise for a restful evening.

September 19th (Saturday and International Model A Day)

8:30 a.m. Breakfast at Cheyenne Café • 209 N. Main Street • Joseph (541) 426-2233.

10:00 a.m. Check out of hotel and leave for the Tri-Cities.

Gas in Wallowa: Goebel's • 504 W. 1st.

Ethanol free gas in Athena: The One Stop • 457 E. Main Street.

Drive via Cold Springs Road to Umatilla, cross the Columbia River and return via Plymouth Road to Clodfelter Road or Webber Canyon.

If you would like to be included in this tour your time is running out. Contact Budzeck's or Jan Jackson's for more information.

Submitted by Jan Jackson



Fashion Feature

Fashions of the Model A Ford Era.

Fashion 101

Patterns for clothes were so popular that they showed up on the cover of the April 1929 issue of *Weldon's Ladies' Journal* printed especially for the Australian and New Zealand market.

The cover indicated that the two daytime-wear suit patterns shown on the left side of the cover photo were free. More and more dress patterns were highlighted with the addition of a stylish hat shown in the pattern cover pictures.

Both have pleated skirts and matching jackets; the other has a blouse with a center-ruffled placket and bow at the top.

The evening dress has a plunging V-neck and camisole with a slanted waistline and bell-shaped long sleeves.

Submitted by Robin Eldhardt



States Day Parade - Sept. 7

Prosser's annual States Day Parade will be held on Monday, September 7th. Club members planning to participate should meet at the Benton City gas station - we will depart for Prosser at 8:30 a.m. At the conclusion of the parade, we'll convene at a local restaurant with the Yakima Apple A's for a delicious Prosser lunch and some tall tale telling.

Restoration Projects

Submitted by Tom Eldhardt

Hyatt Roller Bearings

This is the second of several Restoration Project articles about the types of bearings in the Model A Ford. Subsequent articles will delve into the general steps needed to replace bearings and refurbish the associated components. Areas where it is prudent to replace several bearings at one time will be bunched together.

Henry incorporated 24 or 25 bearings at crucial points on the Model A to prevent shaft deflections and to carry the weight of the car/truck. All surfaces of metal have microscopic rough areas which will heat up when rubbed together. The addition of grease as a lubricant and using the correct type bearing between these surfaces greatly reduces this heat buildup. These bearings were considered frictionless or anti-friction bearings, although all bearings will encounter some friction. There are three kinds of bearings used: Ball bearings (5 or 6), Hyatt roller bearings (7) and Timken tapered roller bearings (12).

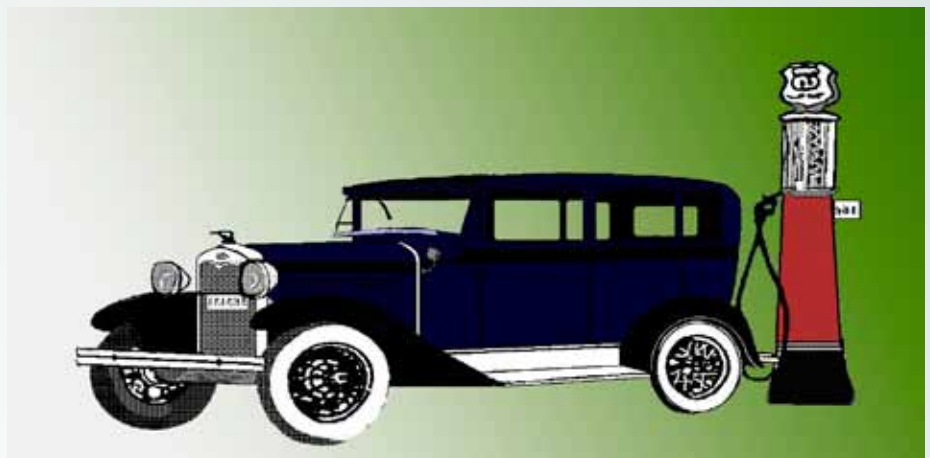
Hyatt roller bearing – Originally of a coil spring construction they may be built today using a solid metal roller with an exterior spiral groove. They are held together by two end plates and end plate connecting rods. The bearing have a large surface contact area, can handle heavy loads, are designed to take out end shock (acting like a spring) and they allow for Drive line/axle length growth as these components heat up.

Qty	Bearing Type	Where Used
1	Hyatt roller	Water Pump at Fan Blade/pulley end
1	Hyatt roller	Drive shaft - at the u-joint end and inside of drive shaft housing
1	Hyatt roller	Transmission main shaft (on front end)
2	Hyatt roller	Transmission secondary shaft (inside of cluster gear unit)
2	Hyatt roller	Rear wheel – Inside of the hub and on the outside of the axle housing

NOTE: Wheel bearing failure causes: Not being adjusted right, contamination or loss of grease.



Hyatt roller bearing (typical)



MAFCA News

International Model A Day: September 19th is a formal opportunity for Model A Ford owners and clubs around the world to all go out for a drive or participate in a Model A event on the same day. Photos obtained by the International Model A Day coordinator will be submitted to national magazines.

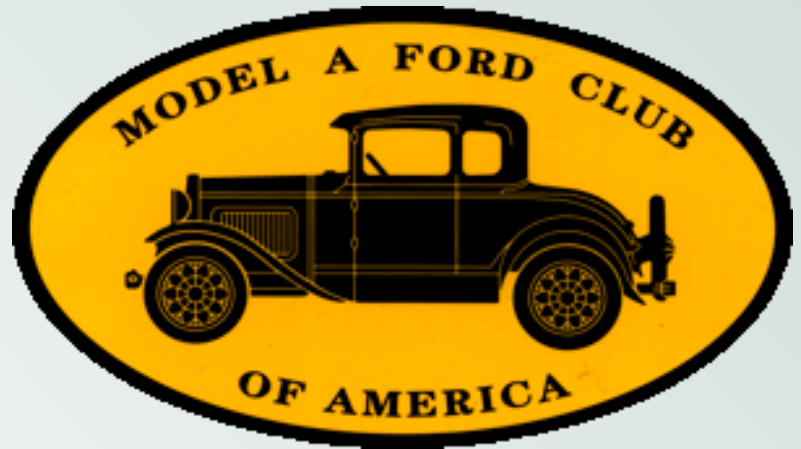
Awards Banquet: This year's MAFCA National Awards Banquet will be held in Medford, Oregon on December 2-5. Three local chapters, the Rogue Valley A's, Henry's Lady, and Sis-Q A's, will cohost this year's event. The Awards Banquet is an opportunity to recap the year, introduce the next Board of Directors, and to give out chapter and individual service and literary awards.



A full description of the activities and registration materials is in the July-August issue of *The Restorer* magazine. The registration forms are also on the web site in two places: on the Calendar page or by downloading this MAFCA page: http://www.mafca.com/downloads/2015_NAB_Reg_Package.pdf

There are three pages in the registration package. The first is a reprint from the description in the July-August *Restorer* magazine. The second is the registration form, which can be filled out on your computer. The last page is the MAFCA Liability Waiver form. Both the registration form and the waiver must be filled out and sent in to assure your registration.

2016 National Convention: The Model A Ford Club of Colorado invites you to come to Loveland, Colorado for the 2016 MAFCA National Convention on June 19-24, 2016. Come and enjoy the cool crisp air of the Rocky Mountain State. Registration materials and full descriptions of events and activities will be published in the January-February 2016 issue of *The Restorer* magazine and also available for download from their web site.



Please go to their web site www.MileHighCountry2016.org for the latest information. Enjoy the videos as a sample of what you'll see in this area. A complete list of nearby accommodations is there for your selection. The Colorado club is looking "forward to seeing and meeting you this coming June."

Articles obtained from the MAFCA web site

The purpose of the club shall be to serve as a medium of exchange of ideas, information and parts for admirers of the Model A Ford, and to aid them in their efforts to restore and preserve the car in its original likeness. Membership in the Model A Ford Club of America is a requirement to joining the Columbia Basin Chapter. To join MAFCA, see the web site at www.mafca.com and click on the "Join MAFCA" tab. Requirements for membership in the chapter shall not insist upon the actual possession of a Model A Ford, merely an interest in the objectives of the club and a desire to take an active part in club activities shall be the primary requirement for membership. (Excerpt from Columbia Basin Model A Club Bylaws dated February 2015.)

1931 Deluxe Rumble Seat Roadster

Previously Restored/ Updated 2015

Engine:

Built by Stan Vermille of Grass Valley, Cal.
Engine sleeved to standard
Domed pistons
Counter weighted and balanced crank
Crank drilled for high pressure oil
Insert bearings, main and rods
Modified V-8 oil pump
Snyder 6-1 head
Full flow oil filter
Adjustable lifters
Adjustable cam end play
Leak-less water pump
V-8 clutch
Thermostat
B-carb.
Intake manifold, bored to B-carb dimensions
60 amp 6 volt alternator
Float A Motor mounts
Radiator pressurized with recovery

Drive-train:

Mitchell syncromesh transmission
Mitchell syncromesh overdrive
378/1 ring and pinion

Top and Interior:

Upholstery, side curtains, top boot cover, car cover

Brakes:

Hydraulic restored to new
Front-48 backing plates with new style drums and new separate hubs
Rear 39 backing plates with original restored rear drums
Cling emergency brake system

Steering: Ford F100 steering

Accessories:

Turn signals with hazard flashers
Twin fender mounted spare tires
Quartz head lights
Oil pressure gauge
Water temp. Gauge
Aries muffler
Optima battery
Heater
Stone Guard
Flying Quail
Twin Side Mirrors
Electric Wiper Motor
Luggage Rack with Trunk
Vintage License Plate
Deluxe Wind Wings
Fuse Panel with built-in Flasher
Electric Fuel Shut-off valve
K & N Rechargeable Air Filter

\$29,500.00

Dean Hinkson: (509) 531 2628



Meeting Minutes

August 13, 2015

The monthly meeting was opened by vice president Jan Jackson. Those attending were Mara Jackson, Pete and Grace Jackson, Blaine and Bev McGillicuddy, Garry and Joanne Bryan, Mary Fraser, Tom and Robin Eldhardt, Rick and Janet Budzeck, Calvin Coffey, Larry and Sue Campbell, Dave Hannah and John Trumbo. The minutes from the July meeting were approved as posted and the treasurer's report was provided by Calvin.

Correspondence: Mara stated the club received a note from Bill Henderson asking for votes in his campaign to be on the MAFCA Board of Directors. She also received a letter from Stan Johnson, president of MAFFI, thanking our club for its previous donation to the Model "A" museum in Gilmore, Michigan and encouraging us to consider donating once a year at any level.

Tours: Jan commented on the following tours:

Saturday, August 22nd – Benton Franklin Fair Parade; 9:00 a.m., is staging around 10th and Dayton in Kennewick.

Monday, September 7th – States Day Parade in Prosser; meet at 8:30 a.m. at the gas station in Benton City.

Individual members commented what a great time they had on Saturday for the "Lady Drives an A" event. Thanks were extended to Robin and Mara for organizing this tour.

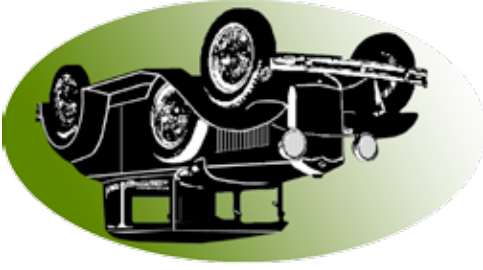
New Business: Mara wondered if club members wanted to discuss the letter from MAFFI. A motion was made by Rick to donate \$50.00 each year beginning January, 2016. The motion was seconded by Garry and passed by the club members.

Projects: Larry mentioned he is looking for a clicking sound in his Model A and has installed a leakless water pump on his car.

Announcements: Jan recognized those celebrating birthdays and anniversaries. He then thanked himself and Mara for providing the refreshments for this evening.

A motion was made, seconded and passed to adjourn the meeting.

Respectfully submitted by Janet Budzeck, Secretary



Columbia Basin Model A Club
703 S. 48th Ave.
West Richland, WA 99353

The Columbia Crier is a publication of
the Columbia Basin Model A Club. For
questions or submittals to the Columbia
Crier contact Jan Jackson by email at:
j-m.jackson@frontier.com or by phone:
(509) 967-2801.